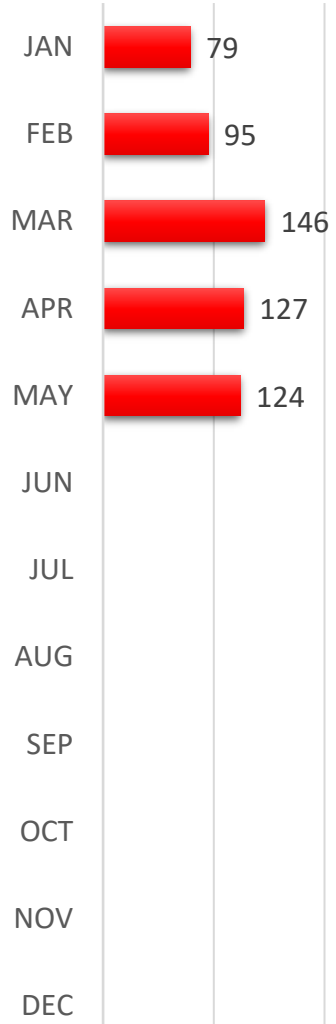


**MAY
2023**

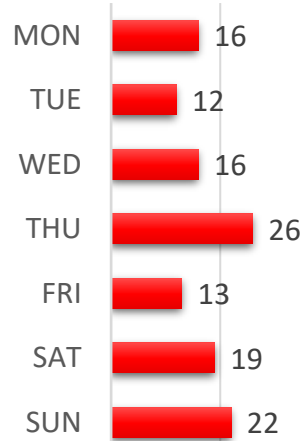
CALLS BY MONTH

0 100 200



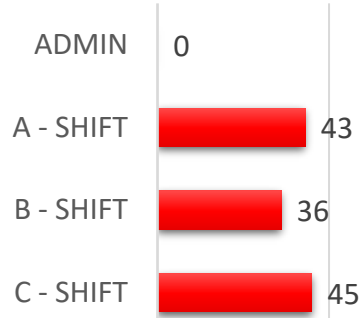
CALLS BY DAY

0 20 40



CALLS BY SHIFT

0 50



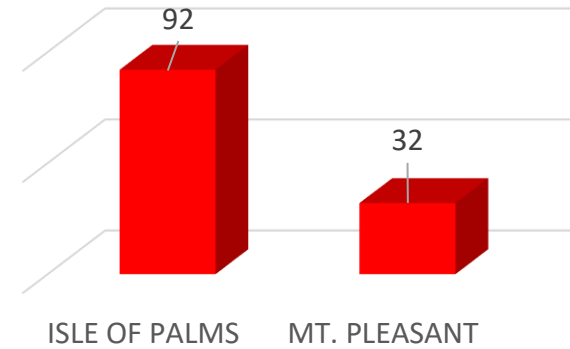
TOTAL CALLS FOR SERVICE

124

INCIDENTS BY CATEGORY

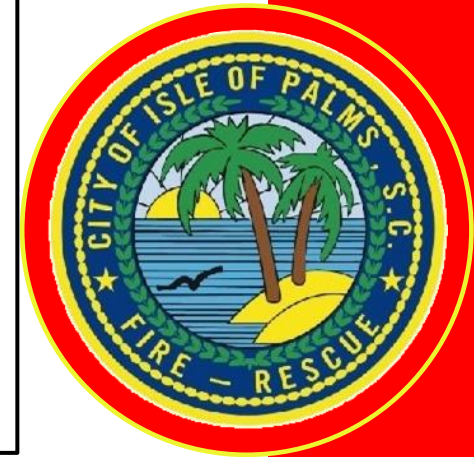
FIRE	3
OVERPRESSURE RUPTURE, EXPLOSION, OVERHEAT (NO FIRE)	0
RESCUE & EMERGENCY MEDICAL SERVICE INCIDENTS	49
HAZARDOUS CONDITION (NO FIRE)	5
SERVICE CALL	9
GOOD INTENT CALL	47
FALSE ALARM & FALSE CALL	11
SEVERE WEATHER & NATURAL DISASTER	0
SPECIAL INCIDENT TYPE	0

CALL LOCATIONS BY CITY

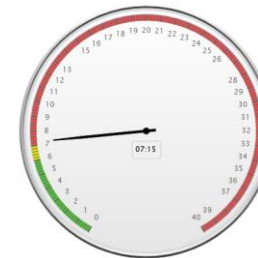


RESIDENCY STATUS

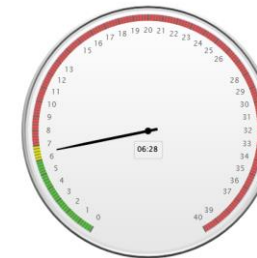
Resident Calls = 47
Non-Resident Calls = 77



AVERAGE TOTAL RESPONSE TIME
7 MIN. 15 SEC



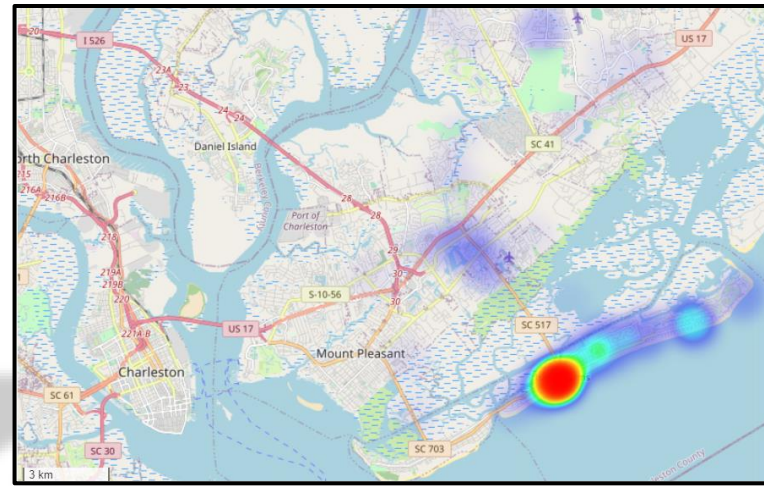
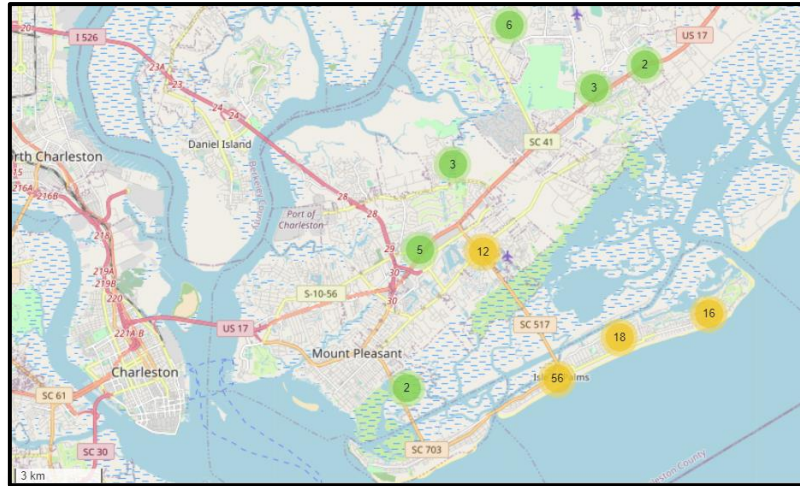
MEDIAN TOTAL RESPONSE TIME
6 MIN. 28 SEC



MONTHLY REPORT

CALL LOCATIONS AND HEAT MAP

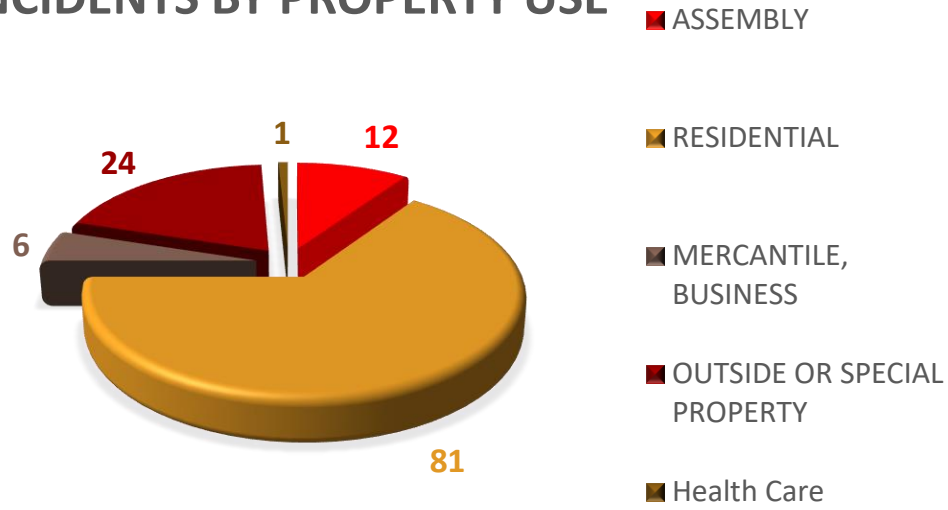
MAY
2023



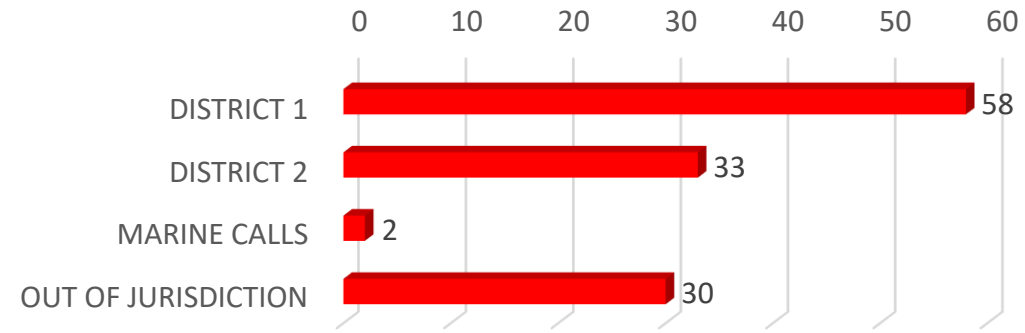
MONTHLY
REPORT

CITY OF ISLE OF PALMS FIRE & RESCUE

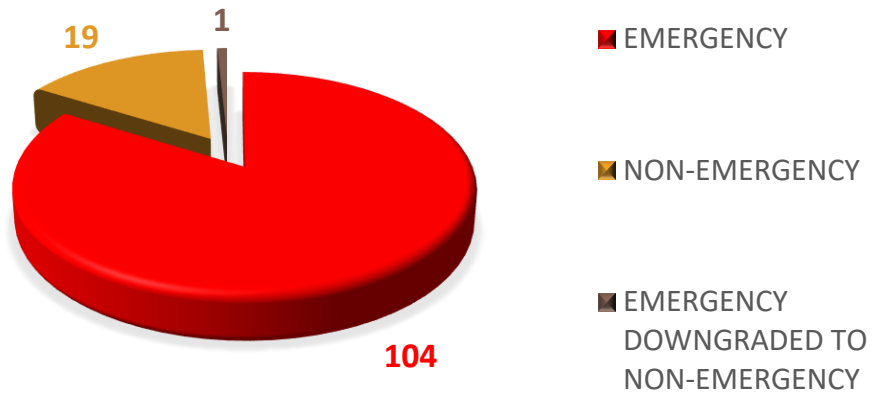
INCIDENTS BY PROPERTY USE



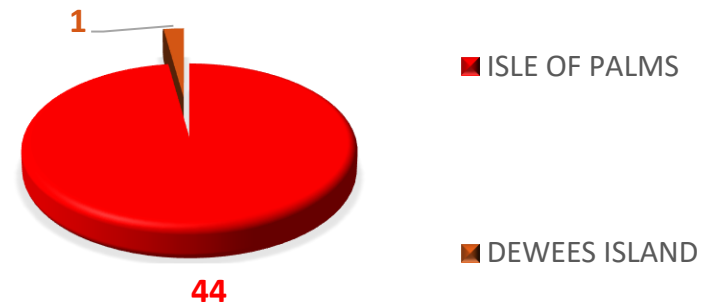
INCIDENTS BY DISTRICT



INCIDENTS BY RESPONSE MODE

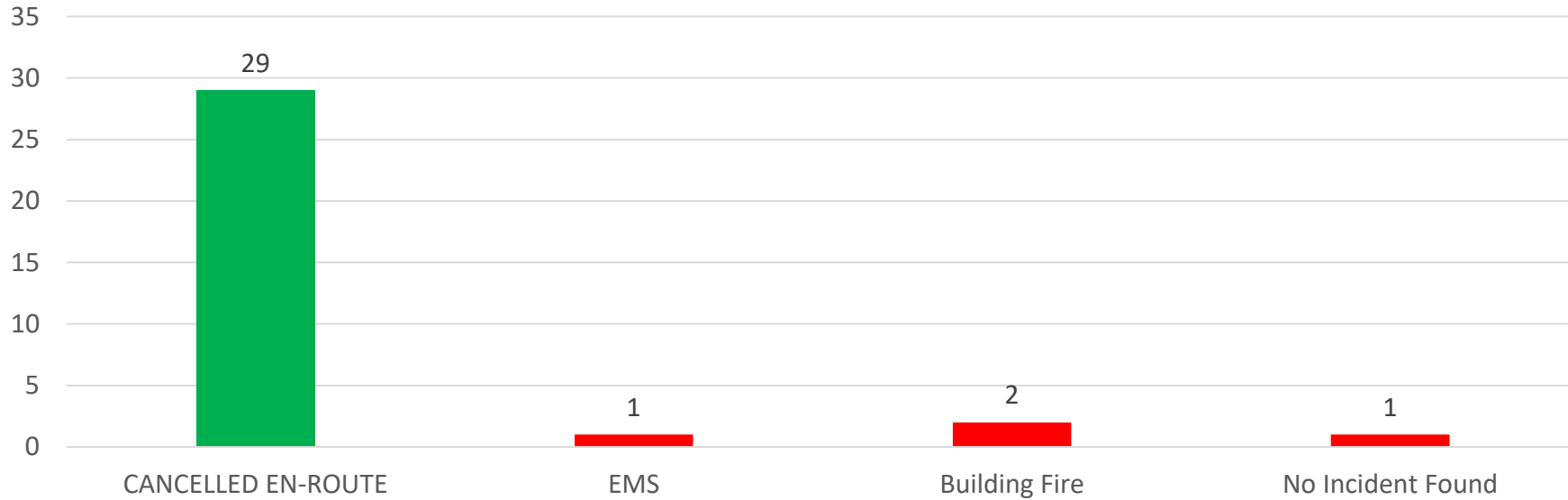


EMS CALLS BY LOCATION

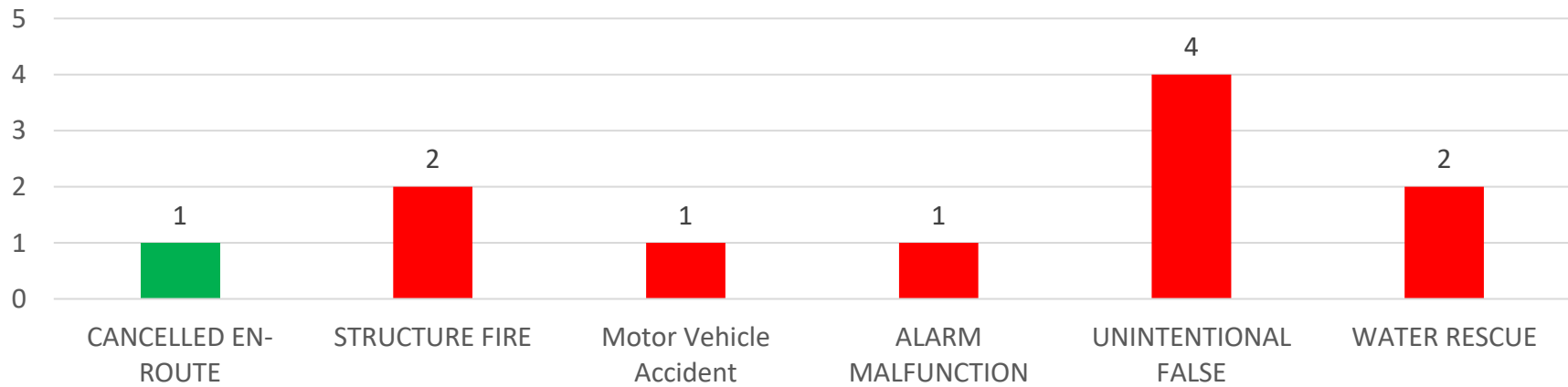


**MAY
2023**

AUTOMATIC AID GIVEN



AUTOMATIC AID RECEIVED



**MONTHLY
REPORT**

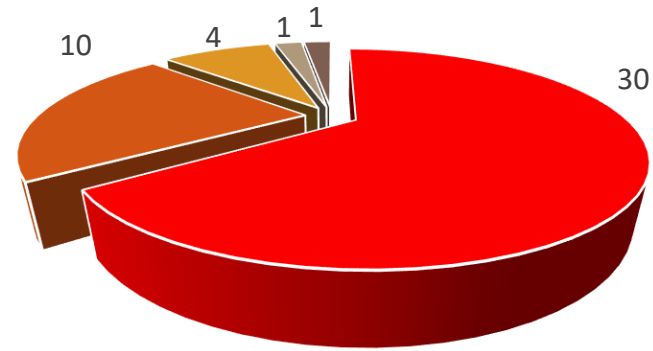


ISLE OF PALMS FIRE DEPARTMENT UNITS RESPONDING TO GIVE AUTOMATIC AID

BC-1006 RESPONSES = 17
L-1001 RESPONSES = 18
ENG-1002 RESPONSES = 3

OTHER DEPARTMENT'S UNITS RESPONDING TO AID ISLE OF PALMS FIRE DEPARTMENT

BC-106 RESPONSES = 1
BC-508 RESPONSES = 2
BC-607 RESPONSES = 1
C-1201 RESPONSES = 1
DV-605 RESPONSES = 2
AIRBT-620 RESPONSES = 1
BOAT-501 RESPONSES = 2
CCR-2 RESPONSES = 2
ENG-501 RESPONSES = 1
ENG-506 RESPONSES = 1
ENG-1201 RESPONSES = 1
L-505 RESPONSES = 1
RES-202 RESPONSES = 1
RES-504 RESPONSES = 5



- CANCELLED PRIOR TO ARRIVAL
- CALLS WORKED IN ISLE OF PALMS
- CALLS WORKED IN MT. PLEASANT
- CALLS WORKED IN AWENDAW
- CALLS WORKED IN MCCLELLANVILLE