



Environmental Advisory Committee

4:00 p.m., Thursday, November 14, 2024

Council Chambers

1207 Palm Boulevard, Isle of Palms, SC 29451

Agenda

1. **Call to order** and acknowledgment that the press and the public have been duly notified of the meeting in accordance with the Freedom of Information Act
2. **Citizen's Comments**
3. **Approval of previous meeting's minutes** – October 17, 2024
4. **Presentations-** Susan Hill Smith on student litter program
5. **Old Business**
 - i. Wildlife
 - ii. Litter- discussion of beach trash program
 - iii. Water Quality- update on water quality testing program
update on City engaging Federal lobbyist
 - iv. Climate Action
6. **New Business**
 - i. Discussion of Dominion Energy palm tree removal
 - ii. Discussion of Dominion Energy program to move power lines underground
7. **Miscellaneous Business**

Next meeting date: 4:00 p.m., Thursday, December 12, 2024
8. **Adjournment**



ENVIRONMENTAL ADVISORY COMMITTEE

4:00pm, Thursday, October 17, 2024

1207 Palm Boulevard, Isle of Palms, SC

and broadcasted live on YouTube: <https://www.youtube.com/user/cityofisleofpalms>

MINUTES

1. Call to order

Present: Sandra Brotherton, Mary Pringle, Todd Murphy, Laura Lovins, Belvin Olasov

Absent: Dane Buckout, Lucia Spiotta, Doug Hatler, Council Member Miars

Staff Present: Director Kerr, Zoning Administrator Simms, Asst. Director Asero

2. Citizen's Comments -- none

3. Approval of previous meeting's minutes

MOTION: Ms. Pringle made a motion to approve the minutes of the September 12, 2024 meeting, and Ms. Lovins seconded the motion. The motion passed unanimously.

4. Presentation - none

5. Old Business

A. Wildlife

Ms. Pringle, Ms. Lovins, and Mr. Olasov shared what they learned at the recent Native Plant Symposium.

Ms. Pringle said that Sharlene Johnson will be at the native plant garden on November 15 at 9:30am to help winterize the garden. Ms. Pringle asked about a small budget to help keep the garden thriving, and Director Kerr said there are funds for that.

Asst. Director Asero would like to look at native alternatives for the City's flower beds across the island. It was suggested that Ms. Johnson and Eddie Bernard of the Town of Mt. Pleasant could make recommendations for proper plantings.

B. Litter

Dr. Brotherton shared information and recommendations she prepared around the City's need to replace the beach trashcan collection vendor next year. That document is attached to these minutes.

Asst. Director Asero shared what he learned about the beach trashcan collection process on Kiawah Island. Discussion ensued as to the scope of work involved in trash collection on the beach across the island. The Committee discussed benefits of a hybrid plan that would include trash cans on the beach as well as cans along the roadside.

Director Kerr proposed that Asst. Director Asero and Dr. Brotherton work on a map that would identify the places where trashcans would be on the beach and or along the roadside and bring it to the next meeting. That map could then be used to help assess a cost estimate for a new vendor.

C. Water Quality

Director Kerr said the engineers are waiting for the “right” water event to collect water samples.

D. Climate Action

Mr. Olasov reported that Charleston County is still waiting to hire a new coordinator for their sustainability office. He would like to see municipal action on prioritizing the action items listed in the Climate Action Plan.

Director Kerr reported that City Council will vote on the installation of the solar panels at their October 22 meeting. They have asked for information on cost savings of the panels.

Ms. Lovins said she, Dr. Brotherton, and Mr. Hatler will meet with Council Member Pierce to discuss efforts to work with the Water & Sewer Commission on sewer expansion and the possibility of sharing the expense of a federal lobbyist. Director Kerr said they have met with the Ferguson Group and will meet with them again next week. The City’s State lobbyist has also referred them to another federal lobbyist to consider. He is unsure if this matter will be discussed at the City Council meeting next week.

Mr. Olasov asked about the energy efficiency efforts during a City Hall renovation. Director Kerr said the current discussion around City Hall is focused on whether or not to renovate City Hall or build a new one in a different location.

6. New Business

A. Discussion of light pollution and exterior lighting ordinance

Mr. Murphy shared some preliminary information he and Ms. Spiotta gathered from the internet regarding light pollution. He also shared how some other island municipalities like Pawley’s Island and Folly Beach have addressed light pollution. He will speak to Folly Beach staff to understand how they approached the issue of changing the lighting and educating the public about the change. The matter will be discussed further at the next meeting.

B. Update on the Sea Level Rise Adaptation Plan

Director Kerr said a final draft of the Sea Level Rise Adaptation Plan should be delivered in the next 30 days. The Committee will be given the opportunity to review it.

6. **Miscellaneous Business**

7. **Adjournment**

The next meeting of the Environmental Advisory Committee is scheduled for Thursday, November 14, 2024 at 4pm.

Ms. Lovins made a motion to adjourn, and Mr. Olasov seconded the motion. The meeting was adjourned at 5:32pm.

Respectfully submitted,

Nicole DeNeane
City Clerk

Environmental Advisory Committee

10/17/24

Background Information:

According to <https://gis.dhec.sc.gov/beachaccess/>, the IOP has 55 beach access points. Open, yellow garbage cans can be found at these access points. The number of cans ranges between 1 and 12 depending on the location of the access path and the amount of foot traffic. In addition, there are open black cans along the front beach commercial area and open yellow cans in the municipal parking lot.

Most trash cans are located on the beach and rest on sand which makes them susceptible to tipping over when a discarded beach chair or tent is placed in the can. Wind can blow litter out of the cans on the beach and animals and birds can remove food scrapes and wastepaper. Cans on the beach must be removed by public works personnel when the area is threatened by tropical systems and king tides. Some trash cans have been relocated to streetside in areas affected by erosion.

Current Contract:

The cans are currently emptied by an independent contractor, who uses specialized equipment that requires the use of open trash cans.

Recommendations:

Location of trash cans

A hybrid approach is recommended. Trash cans may be placed streetside at most beach access paths. Access paths with the heaviest foot traffic (i.e. 25th) may also have additional cans placed behind the dune line. At the front beach commercial area, trash cans would be needed at both the street and behind the dune line.

Type of opening

A covered opening is desirable. Options for a covered opening are a 1) dome top with disposal access on 4 sides or 2) a pull-down handle. Both options would keep birds and animals out, keep rain out, and prevent large items such as tents from being discarded in the trash cans. These options would possibly require an interior can and a trash bag. 3) Current roll carts used by homeowners are also an option at streetside.

Aesthetics

Trash cans should not be an eye sore. Options for improved appearance include using a color that blends with the environment or a wrap. In order to be consistent with our ordinances, cans at street side should be kept in an enclosure.

Worthy of Consideration

Bigbelly cans may be worth considering at streetside on the front beach commercial area. These 50-gal cans are fully enclosed, have a pull-down handle and a foot pedal opening, fullness indicator and a solar powered compactor, which reduces the frequency of emptying. Some models will even collect data. They are aesthetically pleasing and can be covered in a wrap. They can be purchased or leased with a maintenance contract. They are currently being used in Charleston and Pawley's Island. They are more expensive but may be a possible Palmetto Pride project, IOP Chamber Project, or grant opportunity.

Final Thoughts

If any change is made, it will require education of the community about the rationale for the change.

L21 Isle of Palms Palmetto Removals

Address	# of Palms	Cat 1	Cat 2	Cat 3	notes
Charleston Blvd - Pump Station	1	1			
102 Charleston Blvd	1	1			
120 Charleston Blvd	1	1			
126 Charleston Blvd	1			1	
206 Charleston Blvd	4		4		
208 Charleston Blvd	2			2	
214 Charleston Blvd	1	1			
302 Charleston Blvd	4	1	2	1	
304 Charleston Blvd	3	2		1	
310 Charleston Blvd	1	1			
915 Carolina Blvd	3	1		2	
909 Carolina Blvd	2	2			
907 Carolina Blvd	1		1		
811 Carolina Blvd	1	1			
801 Carolina Blvd	2	2			
705 Carolina Blvd	1	1			
625 Carolina Blvd	1	1			
623 Carolina Blvd	3	3			
613 Carolina Blvd	2			2	
611 Carolina Blvd	1			1	
525 Carolina Blvd	2	2			
523 Carolina Blvd	1	1			open wire
521 Carolina Blvd	1	1			
513 Carolina Blvd	2	2			
511 Carolina Blvd	1	1			
509 Carolina Blvd	2	2			
503 Carolina Blvd	1			1	
501 Carolina Blvd	1	1			small palm base of pole
311 Carolina Blvd	1			1	
305 Carolina Blvd	1	1			
207 Carolina Blvd	1	1			washingtonia
208 Carolina Blvd	1	1			open wire
201 Carolina Blvd	2	2			tx pole
200 Carolina Blvd	1	1			
130 Carolina Blvd	1		1		
301 Carolina Blvd	1			1	
701 Carolina Blvd	1	1			
1201 Oak Harbor Blvd	1			1	
1203 Oak Harbor Blvd	4	1		3	
1109 Oak Harbor Blvd	1	1			
1103 Oak Harbor Blvd	1	1			at recloser
14th ave - parking lot	3			3	parking lot
1 14th Ave - county park	4		2	2	
1100 Pavillion Dr	3		1	2	
406 Merritt	1	1			
408 Merritt	1	1			
405 Merritt	5		4	1	

403 Merritt	1	1			
11 4th ave	3	1	2		
6 20th ave	5	5			
16 20th ave	1	1			
1900 waterway blvd	1	1			
8 19th ave	2	1	1		
4 19th ave	1	1			
1700 Dunes Blvd	1		1		
2005 Waterway Blvd	1	1			
31 21st ave	1	1			
21 21st ave	2	2			
19 21st ave	5	5			
15 21st ave	6	4	1	1	
1 20th ave	3	1	2		inside fence
2 20th ave	3	3			
2103 Waterway Blvd	2	1	1		
13 22nd ave	3	1		2	
15 22nd ave	3	2		1	backyard
6 22nd ave	1		1		
2301 waterway blvd	1	1			
2702 Waterway blvd	1	1			
2904 Waterway Blvd	1	1			
2906 Waterway Blvd	1		1		
40 32nd ave	1	1			
38 32nd ave	2	2			
36 32nd ave	2	2			
32 32nd ave	1	1			
30 32nd ave	1		1		
22 32nd ave	1	1			
16 32nd ave	1		1		
14 32nd ave	3	3			
8 32nd ave	1	1			
6 32nd ave	1		1		
13 31st ave	1	1			
15 31st ave	4		4		
23 31st ave	1		1		
29 31st ave	2	1		1	
14 30th ave	3		2	1	
10 30th ave	1	1			small palm at pole
14 29th ave	1	1			
16 29th ave	1	1			
22 29th ave	2	1	1		
24 29th ave	1	1			
30 29th ave	2			2	
1 allie ct	1		1		
5 lauden st	3			3	
12 chapman ave	1	1			
9 chapman ave	1	1			pindo at pole
2800 waterway blvd	2		1	1	
28 28th ave	1	1			

26 28th ave	1	1			
27th ave - ball field	1			1	
27th ave - ball field	1	1			
15 27th ave	1			1	
2700 cameron blvd	5	3		2	
Harris Tetter - tap behind	1	1			
2300 Hartnett Blvd	1	1			
10 23rd ave	2	2			
2301 Hartnett blvd	1	1			
16 23rd ave	1		1		
18 23rd ave	1	1			
24 23rd ave	1			1	
26 23rd ave	1			1	
28 23rd ave	2	2			
32 24th ave	1	1			
28 24th ave	5	5			
26 24th ave	1	1			
24 24th ave	1		1		
18 24th ave	3	1	1	1	
8 24th ave	3	3			
10 24th ave	3	3			
12 25th ave	2			2	
27 25th ave	1			1	
31 25th ave	1			1	
37 25th ave	1	1			
41 25th ave	2	2			
30 26th ave	1	1			
28 26th ave	1	1			
24 26th ave	4	1	1	2	
6 26th ave	1	1			
4 26th ave	2	2			
Backbay on Golf Course	1		1		
15 Sandpiper Ct	1	1			on Palm Blvd
PALM BLVD	55		44	11	on Palm Blvd
14 Sandpiper Ct	1	1			on Palm Blvd
10 Sandpiper Ct	3	3			on Palm Blvd
15 Sandcrab Ct	1	1			on Palm Blvd
14 Sandcrab Ct	2	2			on Palm Blvd
5407 Palm Blvd	1	1			on Palm Blvd
5 Shadrow	1	1			on Palm Blvd
4 Shadrow	1	1			on Palm Blvd
7 Oyster Row	2	2			on Palm Blvd
4 Oyster Row	1	1			on Palm Blvd
8 Fishers Alley	2	1	1		1 dead within 10 feet
6 Edgewater Alley	5	5			on Palm Blvd
5 Dolphin Row	2	2			on Palm Blvd
11 Abalone Alley	1	1			on Palm Blvd
Citadel Beach Club	3	2	1		at base of pole
9 Abalone	2	2			1 washingtonian
7 Abalone Alley	1	1			at angle pole

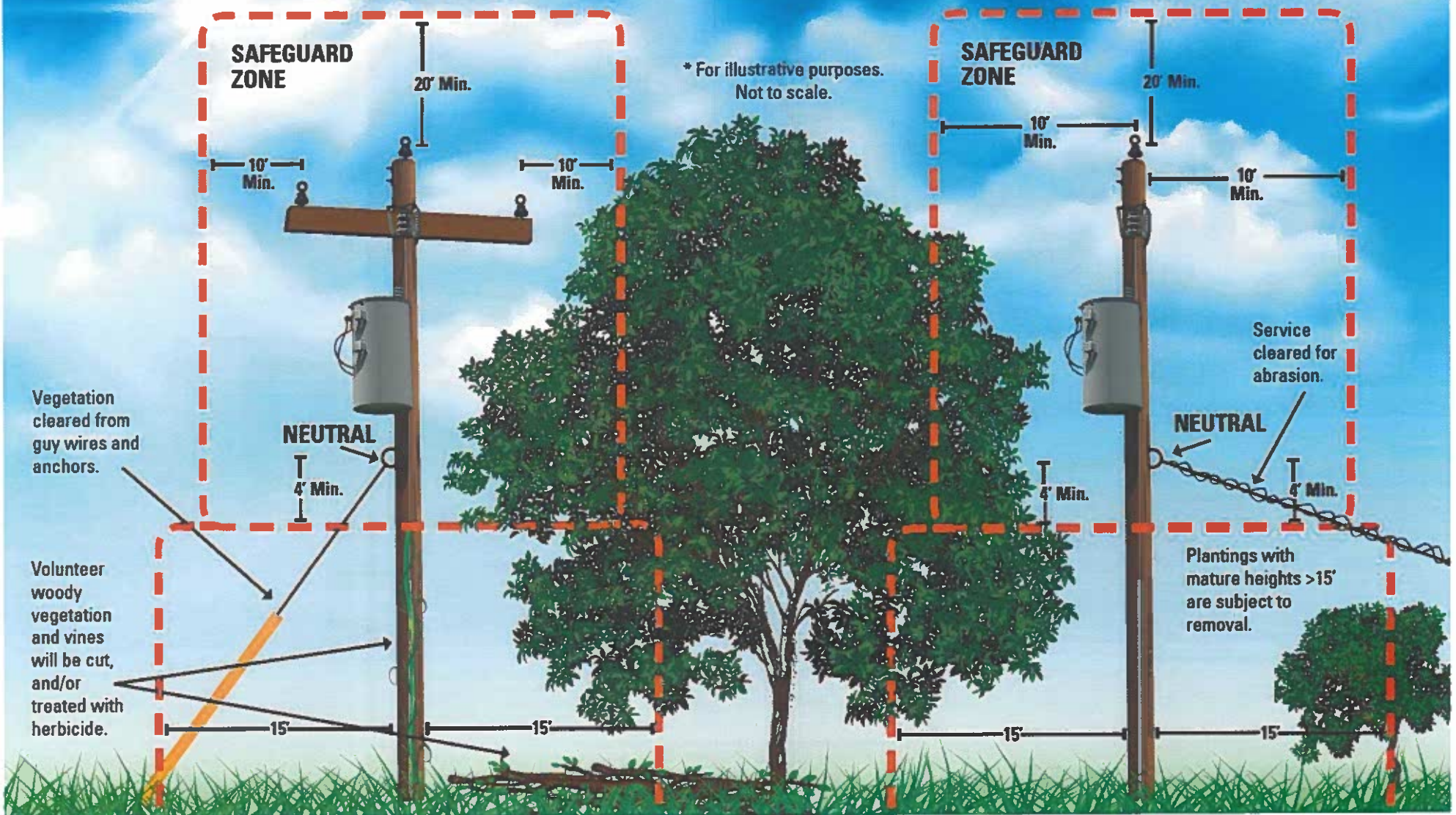
45th Ave and Palm Blvd	1	1			
4403 Palm Blvd	1	1			
12 42nd ave	1	1			at dip pole
2 Intracoastal Ct	1	1			no paint behind fence
Dewes Private Drive / Parking	3	1	2		
IOP Fire Station - 44 41st Ave	1	1			at Tx pole
36 41st Ave	1	1			
4006 Cameron Blvd	2	2			
4002 Cameron Blvd	1		1		
3904 Cameron Blvd	1	1			
3902 Cameron Blvd	2		2		
3900 Cameron Blvd	1	1			
3806 Cameron Blvd	2		2		
3802 Cameron Blvd	1	1			1 washingtonian
7 37th Ave	1	1			on cameron side has lighting
3605 Cameron Blvd	1	1			small palm on pole
6 36th Ave	1		1		
5 35th Ave	2		2		2 pendo palms
8 34th Ave	3	1	2		
6 34th Ave	1	1			
3301 Cameron Blvd	1	1			
7 33rd Ave	2	2			
3 33rd Ave	1	1			
7 32nd Ave	2	1	1		no paint on CAT 1
3105 Cameron Blvd	2	1	1		
3103 Cameron Blvd	1	1			
7 31st Ave	3	1	2		
3009 Cameron Blvd	2	1	1		
2807 Cameron Blvd	4	1	3		
2805 Cameron Blvd	1	1			
2705 Cameron Blvd	2	2			
2603 Cameron Blvd	2	2			
2601 Cameron Blvd	2	2			
2507 Cameron Blvd	3	1	2		
2501 Cameron Blvd	1			1	
7 23rd Ave	2			2	
26 41st Ave	1	1			backlot
16 41st Ave	1	1			No Paint - backlot
23 42nd Ave	2	2			No Paint - backlot
18 41st Ave	1	1			No Paint - backlot
19 42nd Ave	1	1			No Paint - backlot
12 41st Ave	1	1			No Paint - backlot
15 42nd Ave	2	2			No Paint - backlot
4101 Palm Blvd	5	5			
15 31st ave	1	1			no paint in corner at TX pole
2901 Hartnett Blvd	1	1			
11 29th ave	2	1	1		
2804 Hartnett Blvd	2		1	1	
11 27th Ave	1	1			washingtonia palm
14 25th ave	1	1			

2307 Hartnett Blvd	1	1			
2305 Hartnett Blvd	5	3	1	1	
2303 Hartnett Blvd	2	1	1		
1 4th ave	14	13	1		1- no paint county park
Mayor Carmen Park - Palm Blvd	3	3			
1513 Palm Blvd - island center	7	2		5	Harris Teeter
1207 Palm Blvd	7	3	4		City Hall
1203 Palm Blvd	4	3	1		
1105 Palm Blvd	3	2	1		at scada switch
1101 Palm Blvd	4		4		
1 11th ave	2		2		
1009 Palm Blvd	5		2	3	
907 Palm Blvd	1		1		
815 Palm Blvd	1			1	
801 Palm Blvd	1		1		
709 Palm Blvd	2	2			1 at pole 1 at open wire
707 Palm Blvd	3	1	1	1	
705 Palm Blvd	3		1	2	
505 Palm Blvd	4		4		
503 Palm Blvd	2		2		
412 Merritt Blvd	6	2	4		palm blvd side
501 Palm Blvd	9	5	4		
409 Palm Blvd	9	6	3		
407 Palm Blvd	5	1	2	2	
405 Palm Blvd	10	6	4		
403 Palm Blvd	3	3			
9 4th ave	5	3	2		
309 Palm Blvd	3	2		1	
201 Palm Blvd	4	1	1	2	Exchange Club
103 Palm Blvd	1	1			
110 Palm Blvd	2	2			open wire
312 Palm Blvd	3	3			open wire backyard
402 Palm Blvd	1	1			
406 Palm Blvd	2	1	1		
17 5th ave	3	3			at TX pole and in DGs
10 5th Ave	1	1			open wire
514 Palm Blvd	1	1			
516 Palm Blvd	1			1	
522 Palm Blvd	1	1			open wire
700 7th ave	1	1			open wire
	537	292	161	84	

THREE PHASE LINE

SINGLE PHASE LINE

* For illustrative purposes.
Not to scale.



Only qualified utility line clearance contractors who meet OSHA qualifications are legally permitted to work within 10 feet of distribution power lines or work on a tree that has branches within 10 feet of distribution power lines. To learn more, visit [OSHA.gov](https://www.osha.gov). Safety is our top priority. We urge property owners and contractors to notify us in advance of beginning any work near overhead lines to ensure a safe work zone.



Scan code to view answers to FAQs at: [DominionEnergy.com/Trees](https://www.dominionenergy.com/trees)
1-800-251-7234