

City of Isle of Palms, South Carolina
Request for Proposals 2023-01
Sea Level Adaptation Plan

RFP Question Responses
April 12, 2023

1. The Background section (Page 2) indicates that an inventory of the existing stormwater infrastructure is included as an exhibit. Could the City provide that exhibit to prospective bidders?

Answer- Yes, see attached.

2. Other than the stormwater infrastructure, are additional public and private asset datasets available or do they need to be generated as part of this project?

Answer- There is not an asset dataset available from the City. The project includes deliverables of an inventory of existing conditions and a description of vulnerabilities. While these deliverables are not explicitly datasets, they could be presented as datasets. The final format of these deliverables should come as a suggestion from the chosen proposer.

3. What are the groundwater impacts of concern (e.g., saltwater intrusion, groundwater rise, etc.)?

Answer- The City's two primary areas of concern with groundwater are the highland's ability to absorb stormwater and treat wastewater through the use of on-site septic systems, which are still very prevalent on the island.

4. Will the consultant be expected to complete a groundwater modeling component, or will they only be expected to integrate existing data (e.g., data being leveraged for the drainage master plan or other sources)?

Answer- Groundwater modeling is not an expectation, but sound predictions should be developed to help determine vulnerabilities.

5. When will a draft of the drainage master plan be available for review? What type of modeling is being conducted for the drainage master plan?

Answer- the drainage masterplan consultant will be delivering the report to Council on May 9th, 2023 and it will be made available at that time.

6. Please identify if there are schedule expectations for each task or the project as a whole.

Answer- there will be an expectation of timely progress, but no schedule has been developed and the City and the chosen proposer will need to establish a schedule as part of the contract negotiation.

7. Please indicate if there are funding sources identified for this effort or if there are general expectations or guidance with respect to project cost.

Answer- The City has included \$20,000 in the current budget for this project, but part of the negotiations with the chosen respondent will be to develop an expectation of cost

and the City may choose to allocate additional funding to the project and/or seek grant funding from partners.

8. Is shoreline change or beach erosion an item of concern that should be included in the investigation?

Answer- Yes, the City believes that beach erosion is a major vulnerability that should be included. The City has been monitoring the beach shoreline since 2008 and information on projects and reports can be found here: <https://www.iop.net/administration/beach-restoration>

9. Are there specific NOAA Sea Level Rise scenarios of interest to the community?

Answer- the City will rely on the chosen consultant to advise on this point.

10. In addition to the year 2100 projection as noted in the RFP, are there other intermediate dates of interest?

Answer- the City will rely on the chosen consultant to advise on this point.

11. Based on Task 1, Item 2, how many internal meetings are expected between Tasks? Outside of interviews, are internal group meetings expected with separate parties or can an internal group meeting include the full group of participants (public officials, community groups, etc.) as one committee?

Answer- the City will rely on the chosen consultant to advise on this point, but expects that this could either be achieved through 2-4 larger meetings or 8-10 smaller meetings or any combination of large and small meetings.

12. Task 1, Item 4 notes public outreach workshops. How many public outreach workshops are expected to be scoped for this plan?

Answer- the City will rely on the chosen consultant to advise on this point.

13. Task 1, Item 3 of the Request for Proposal notes "Compile Sea Level Rise Data including Sea Level Rise Data with Groundwater Impacts and Flooding from Rainfall and Waves." Please clarify if this project is expected to generate new modeling or if the project is expected to leverage existing modeling and hazard mapping to support development of the adaptation plan. If new modeling efforts are expected, please identify what modeling efforts are desired.

Answer- no new modeling is expected as part of this project, but the chosen consultant will be expected to leverage existing modeling.

14. Could an extension to the Deadline for Submission be granted to 2 weeks following the publication of the Addendum?

Answer- no, as meeting dates to review submittals have been established.

15. Can you please confirm that the correct language is included in the RFP under the section Proposal Format, B, that "relevant large-scale drainage system redesign

projects” is the desired phrasing, and not “relevant large-scale sea level rise adaptation plan projects” or similar?

Answer- it is confirmed that the proposing firms should show examples of similar sea level rise adaptation plans, not drainage plans.

16. Is this a grant-funded project and can you provide more information on the expected budget for this project to appropriately scale the level of effort?

Answer- grant funding is not currently part of this project, but it could be sought later.

17. Will the cost benefit analysis mentioned need to be consistent with FEMA’s BCA methodology?

Answer- no, the language in the RFP is not referring to FEMA’s methodology and it is asking for general budgeting advice on how to best use future funding.

FED. RD. DIV. NO.	STATE	COUNTY	FILE NO.	PROJECT NO.	ROUTE NO.	SHEET NO.
3	SC	CHARLESTON				1

SHEET INDEX

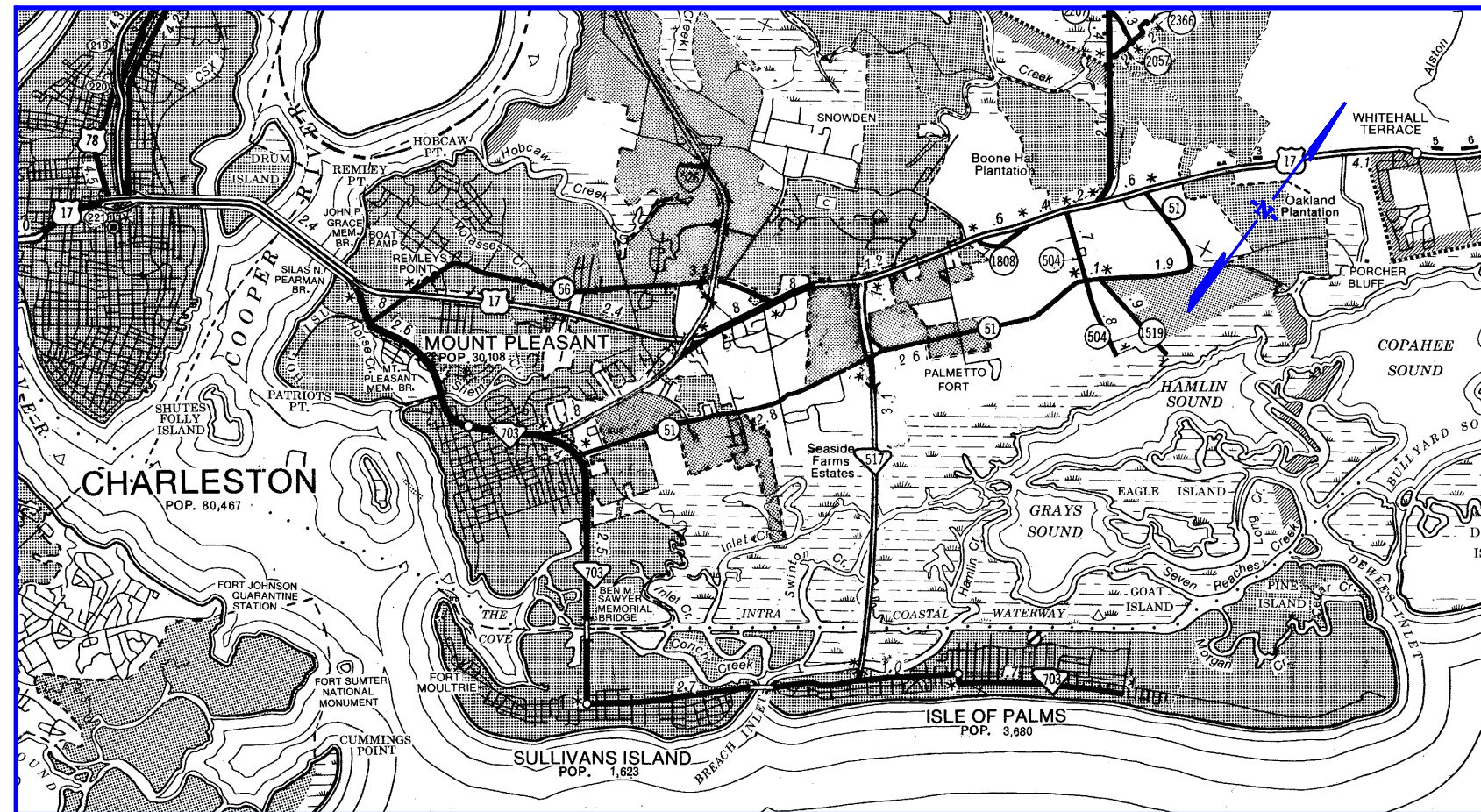
SHEET NO.	DESCRIPTION	SHEET TOTALS
1	TITLE SHEET	1
2	MAP INDEX SHEET	1
3 - 16	PLAN SHEETS	14
TOTAL 16		

CHARLESTON COUNTY DEPARTMENT OF PUBLIC WORKS



CHARLESTON COUNTY SOUTH CAROLINA

DRAINAGE INVENTORY PLAN
CITY OF ISLE OF PALMS
CHARLESTON COUNTY



LAYOUT
N.T.S.



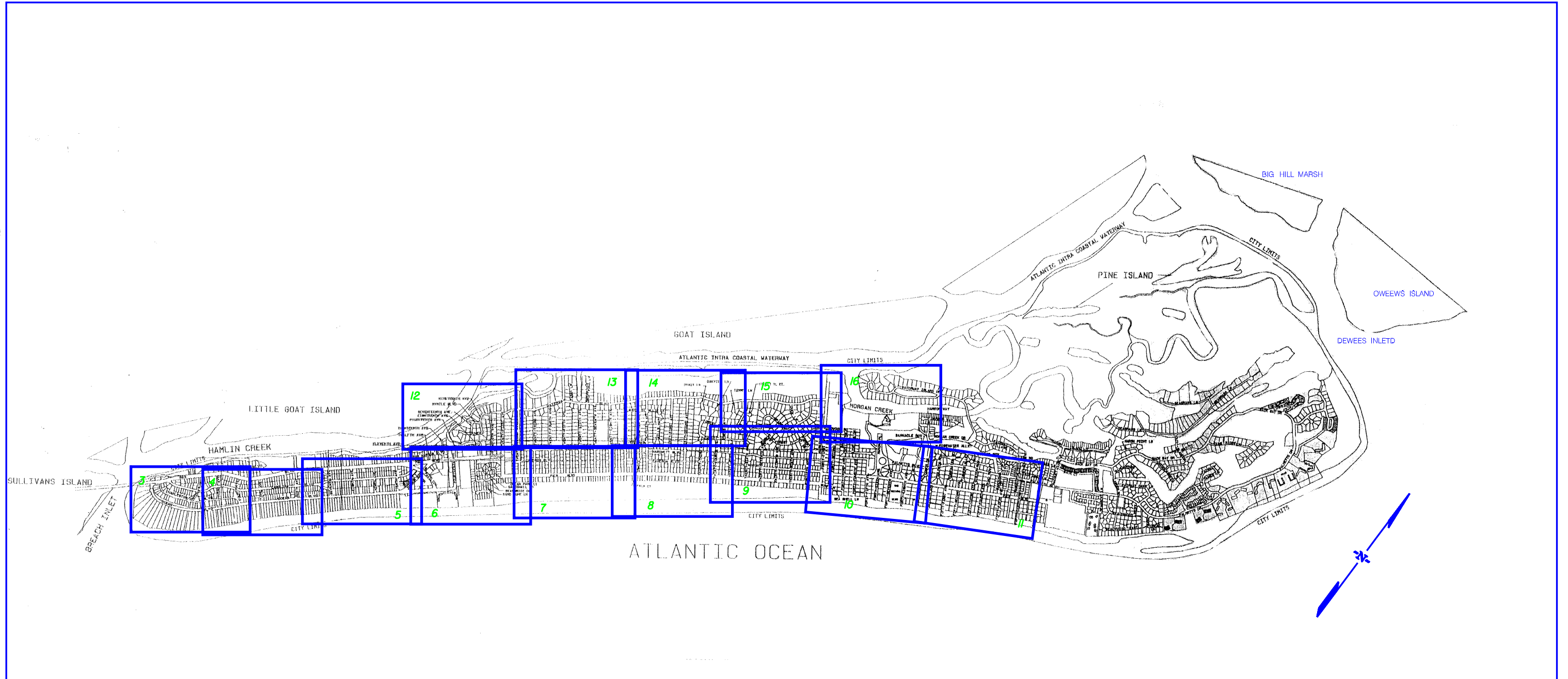
6			
5			
4			
3			
2			
1			
REV. NO.	BY	DATE	DESCRIPTION OF REVISION

COUNTY OF CHARLESTON
DEPARTMENT OF PUBLIC WORKS

TITLE SHEET
DRAINAGE INVENTORY PLANS

FED. RD. DIV. NO.	STATE	COUNTY	FILE NO.	PROJECT NO.	ROUTE NO.	SHEET NO.
3	SC	CHARLESTON				2

MAP INDEX

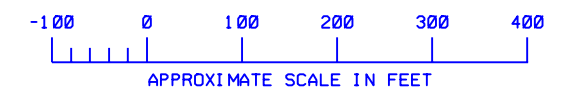
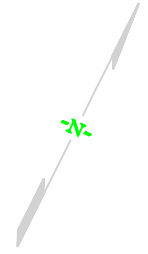
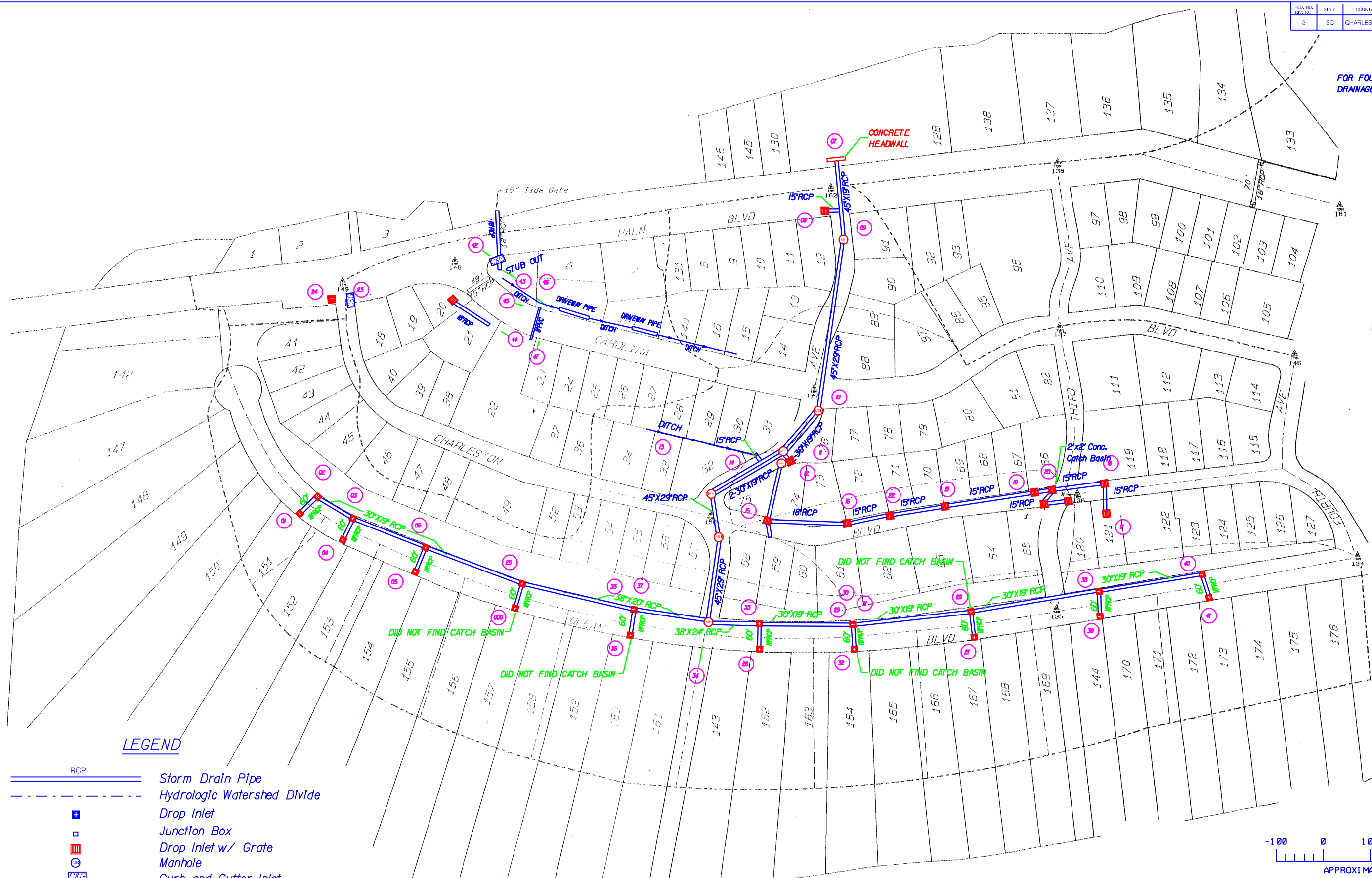


6			
5			
4			
3			
2			
1			
REV. NO.	BY	DATE	DESCRIPTION OF REVISION

<p>COUNTY OF CHARLESTON DEPARTMENT OF PUBLIC WORKS</p> <p>PLAN INDEX SHEET DRAINAGE INVENTORY PLANS</p> <p>SCALE 100' = 1"</p>
--

FED. RD. DIST. NO.	STATE	COUNTY	FILE NO.	PROJECT NO.	ROUTE NO.	SHEET NO.
3	SC	CHARLESTON				3

FOR FOURTH AVE & MERRIT BLVD.
DRAINAGE SEE SHEET 568 10



LEGEND

- RCP Storm Drain Pipe
- Hydrologic Watershed Divide
- Drop Inlet
- Junction Box
- Drop Inlet w/ Grate
- Manhole
- Curb and Gutter Inlet
- Open Ditch
- Swale Ditch
- Temporary Bench Mark
- Unable To Locate

- PIPE CODE**
- RCP Reinforced Concrete Pipe
 - CMP Corrugated Metal Pipe
 - BFP Bituminous Fiber Pipe
 - DIP Ductile Iron Pipe
 - PVC Plastic Pipe
 - VCP Vitrified Clay Pipe

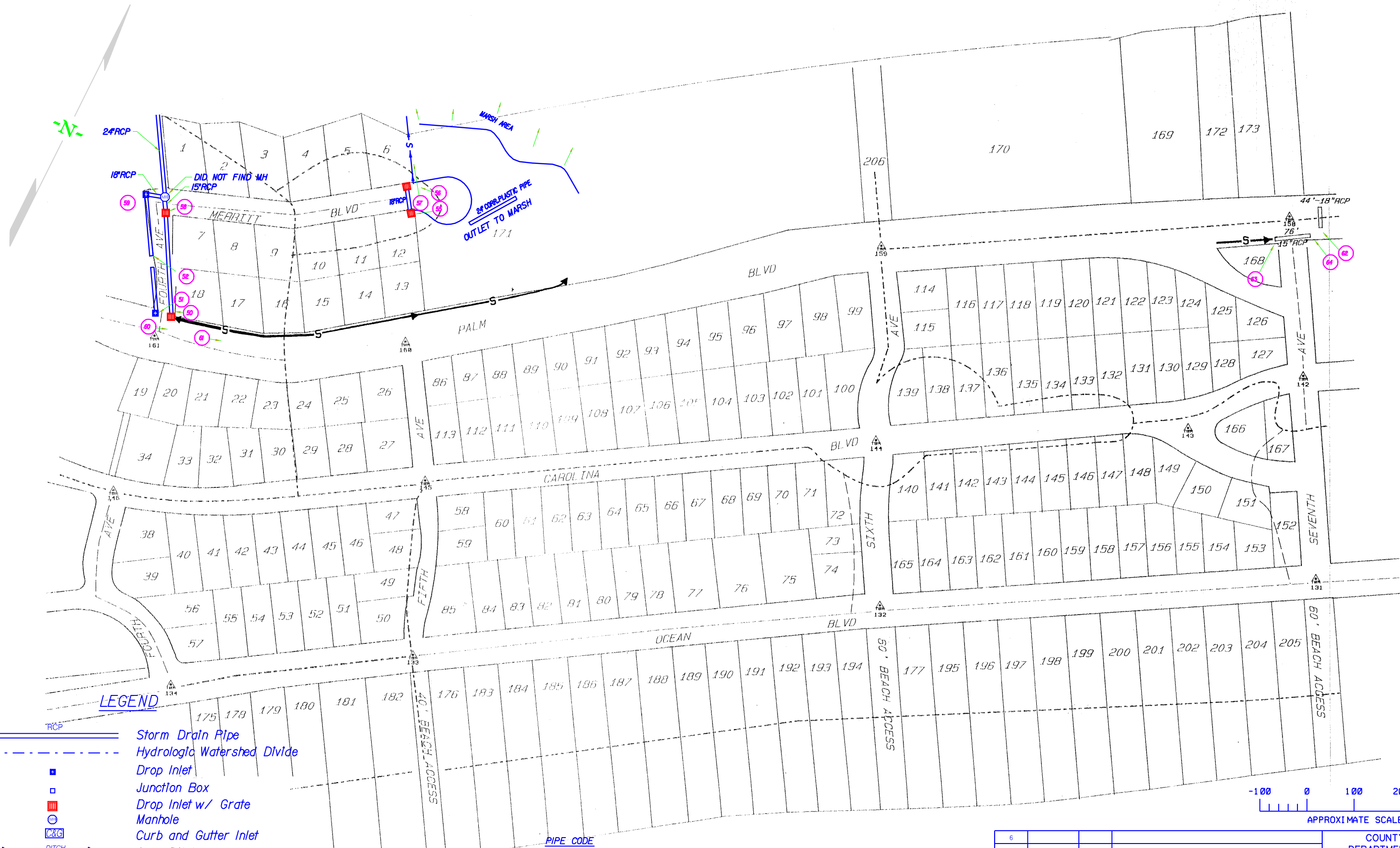


6				
5				
4				
3				
2				
1				
REV. NO.	BY	DATE	DESCRIPTION OF REVISION	

COUNTY OF CHARLESTON
DEPARTMENT OF PUBLIC WORKS
ISLE OF PALMS DRAINAGE INVENTORY

SHEET 3

SCALE 1:100

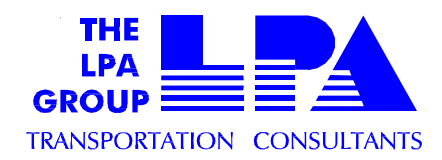
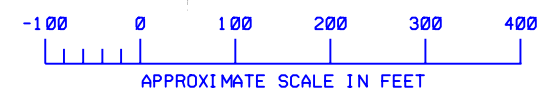


LEGEND

- Storm Drain Pipe
- Hydrologic Watershed Divide
- Drop Inlet
- Junction Box
- Drop Inlet w/ Grate
- Manhole
- Curb and Gutter Inlet
- Open Ditch
- Swale Ditch
- Temporary Bench Mark
- Unable To Locate

PIPE CODE

- RCP Reinforced Concrete Pipe
- CMP Corrugated Metal Pipe
- BFP Bituminous Fiber Pipe
- DIP Ductile Iron Pipe
- PVC Plastic Pipe
- VCP Vitrified Clay Pipe

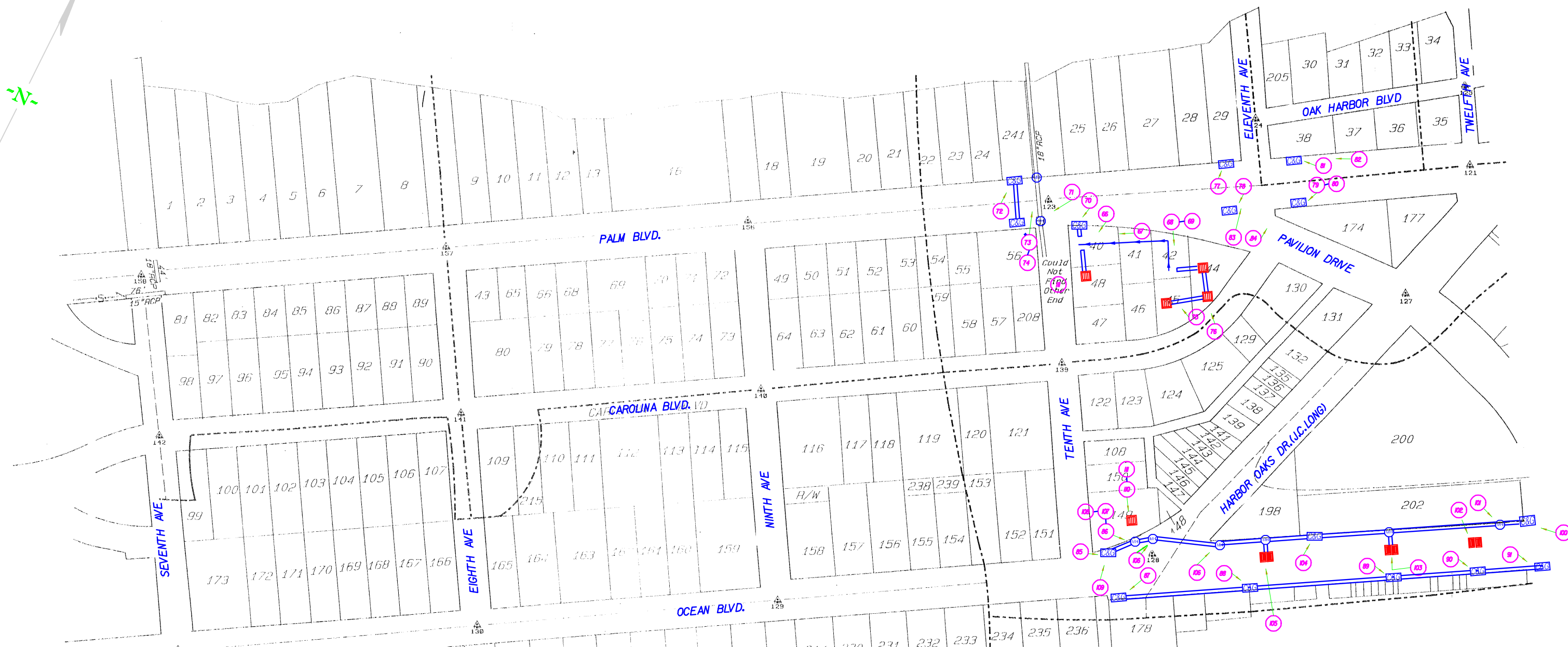
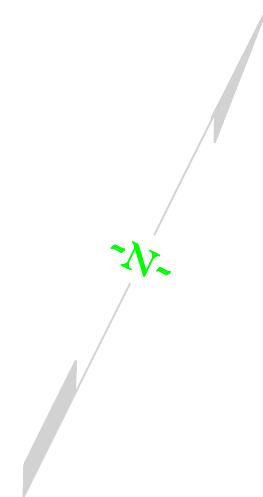


6				
5				
4				
3				
2				
1				
REV. NO.	BY	DATE	DESCRIPTION OF REVISION	

COUNTY OF CHARLESTON
DEPARTMENT OF PUBLIC WORKS
ISLE OF PALMS DRAINAGE INVENTORY

SHEET 4

SCALE 1:100



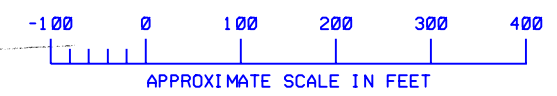
LEGEND

- RCP Storm Drain Pipe
- Hydrologic Watershed Divide
- Drop Inlet
- Junction Box
- Drop Inlet w/ Grate
- Manhole
- Curb and Gutter Inlet
- Open Ditch
- Swale Ditch
- Temporary Bench Mark
- Unable To Locate

PIPE CODE

- RCP Reinforced Concrete Pipe
- CMP Corrugated Metal Pipe
- BFP Bituminous Fiber Pipe
- DIP Ductile Iron Pipe
- PVC Plastic Pipe
- VCP Vitrified Clay Pipe

NOTE: NEED PIPE SIZE, LENGTH OF PIPES, AND DIRECTION OF FLOW.



6				
5				
4				
3				
2				
1				
REV. NO.	BY	DATE	DESCRIPTION OF REVISION	

FED. RD. DIV. NO.	STATE	COUNTY	FILE NO.	PROJECT I.D.	ROUTE NO.	SHEET NO.
3	SC	CHARLESTON				6

568-8-0

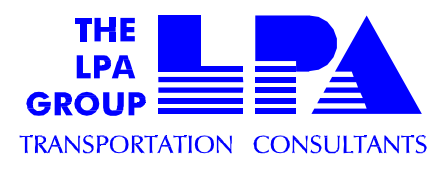
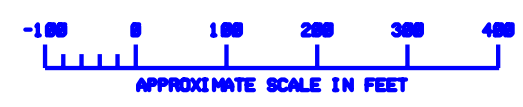


LEGEND

- RCP Storm Drain Pipe
- Hydrologic Watershed Divide
- Drop Inlet
- Junction Box
- Drop Inlet w/ Grate
- Manhole
- Curb and Gutter Inlet
- Open Ditch
- Swale Ditch
- Temporary Bench Mark
- Unable To Locate

PIPE CODE

- RCP Reinforced Concrete Pipe
- CMP Corrugated Metal Pipe
- BFP Bituminous Fiber Pipe
- DIP Ductile Iron Pipe
- PVC Plastic Pipe
- VCP Vitrified Clay Pipe



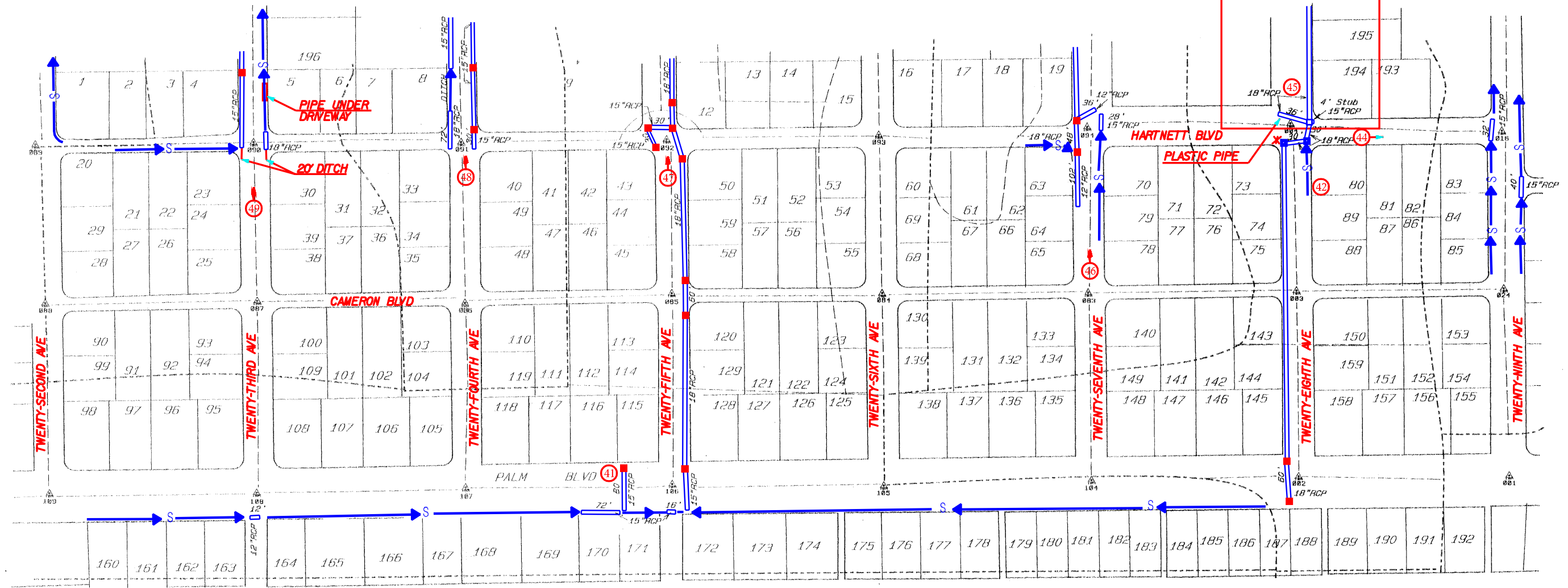
6			
5			
4			
3			
2			
1			
REV. NO.	BY	DATE	DESCRIPTION OF REVISION

COUNTY OF CHARLESTON DEPARTMENT OF PUBLIC WORKS ISLE OF PALMS DRAINAGE INDEX	
SHEET 6	
SCALE 100' = 1"	

571-9-0

571-5-0

NEW CONSTRUCTION / DRAINAGE



568-12-0

571-10-0

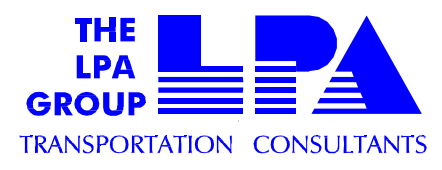
PIPES UNDER DRIVEWAYS ALONG PALM BLVD.

LEGEND

- RCP Storm Drain Pipe
- Hydrologic Watershed Divide
- Drop Inlet
- Junction Box
- Drop Inlet w/ Grate
- Manhole
- Curb and Gutter Inlet
- Open Ditch
- Swale Ditch
- Temporary Bench Mark
- Unable To Locate

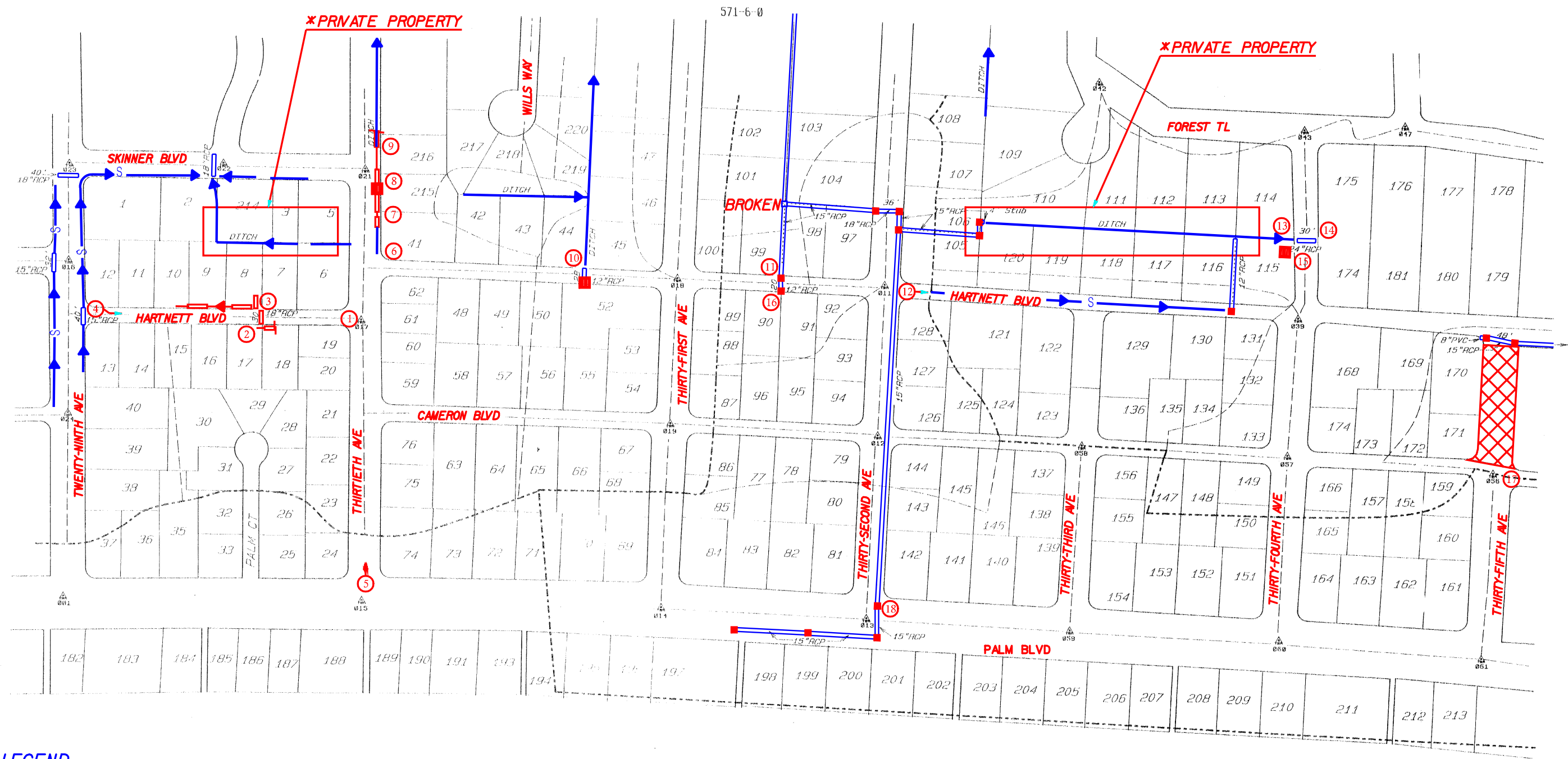
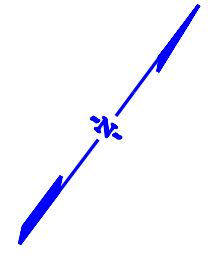
PIPE CODE

- RCP Reinforced Concrete Pipe
- CMP Corrugated Metal Pipe
- BFP Bituminous Fiber Pipe
- DIP Ductile Iron Pipe
- PVC Plastic Pipe
- VCP Vitrified Clay Pipe



6			
5			
4			
3			
2			
1			
REV. NO.	BY	DATE	DESCRIPTION OF REVISION

COUNTY OF CHARLESTON DEPARTMENT OF PUBLIC WORKS ISLE OF PALMS DRAINAGE INVENTORY	
SHEET 7	
SCALE 100' = 1"	

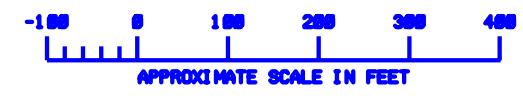


LEGEND

- RCP Storm Drain Pipe
- Hydrologic Watershed Divide
- Drop Inlet
- Junction Box
- Drop Inlet w/ Grate
- Manhole
- Curb and Gutter Inlet
- Open Ditch
- Swale Ditch
- Temporary Bench Mark
- Unable To Locate

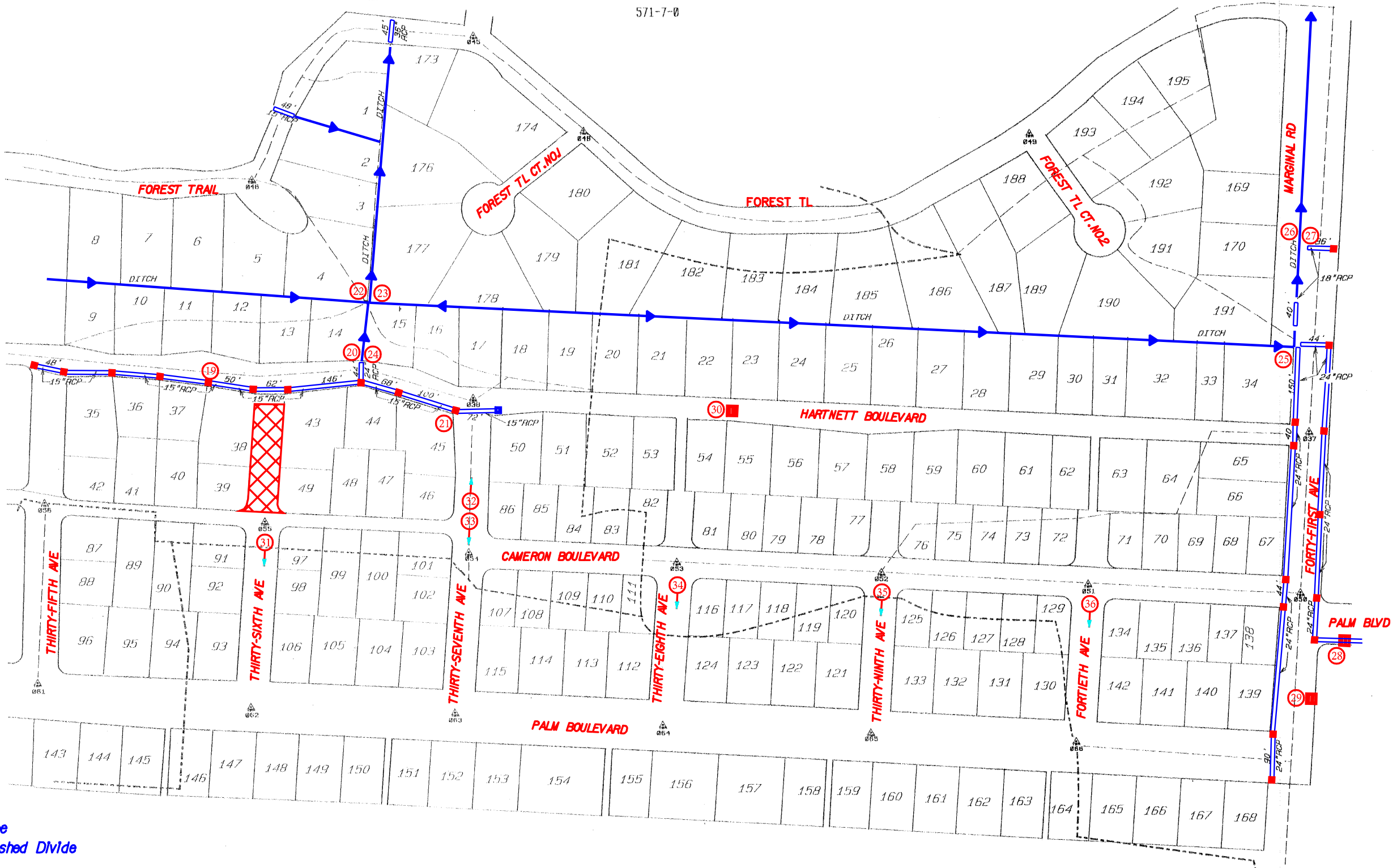
PIPE CODE

- RCP Reinforced Concrete Pipe
- CMP Corrugated Metal Pipe
- BFP Bituminous Fiber Pipe
- DIP Ductile Iron Pipe
- PVC Plastic Pipe
- VCP Vitrified Clay Pipe



6			
5			
4			
3			
2			
1			
REV. NO.	BY	DATE	DESCRIPTION OF REVISION

COUNTY OF CHARLESTON DEPARTMENT OF PUBLIC WORKS ISLE OF PALMS DRAINAGE INVENTORY	
SHEET 8	
SCALE 100' = 1"	

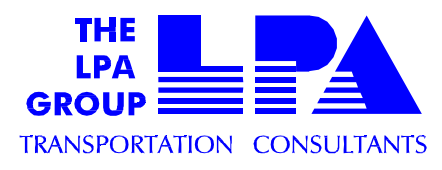
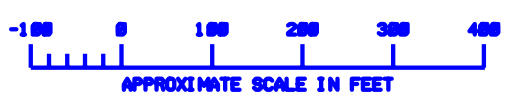


LEGEND

- RCP Storm Drain Pipe
- Hydrologic Watershed Divide
- Drop Inlet
- Junction Box
- Drop Inlet w/ Grate
- Manhole
- Curb and Gutter Inlet
- Open Ditch
- Swale Ditch
- Temporary Bench Mark
- Unable To Locate

PIPE CODE

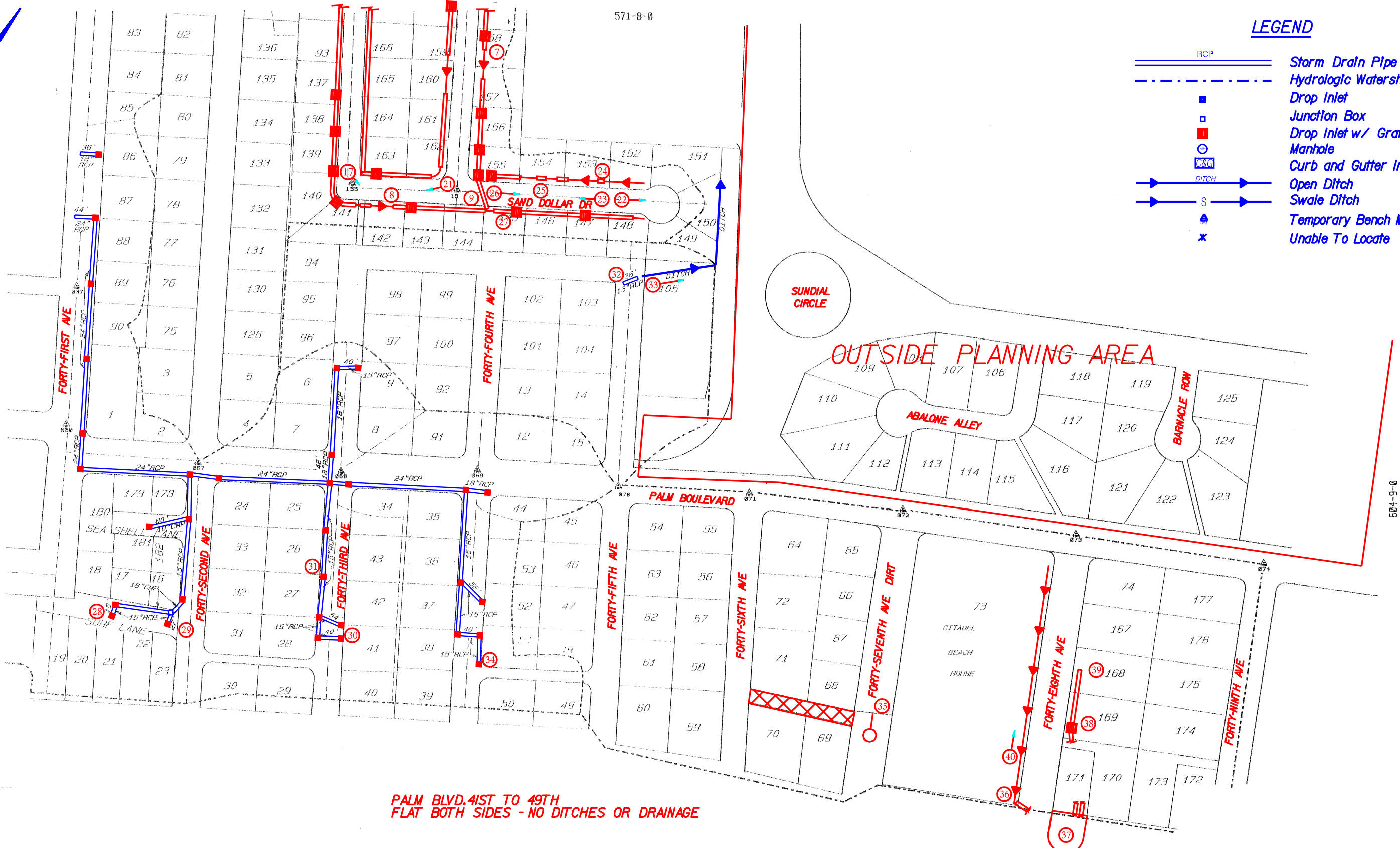
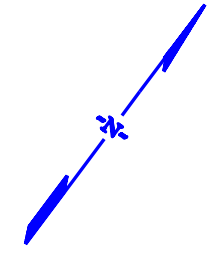
- RCP Reinforced Concrete Pipe
- CMP Corrugated Metal Pipe
- BFP Bituminous Fiber Pipe
- DIP Ductile Iron Pipe
- PVC Plastic Pipe
- VCP Vitrified Clay Pipe



6			
5			
4			
3			
2			
1			
REV. NO.	BY	DATE	DESCRIPTION OF REVISION

LEGEND

- RCP Storm Drain Pipe
- Hydrologic Watershed Divide
- Drop Inlet
- Junction Box
- Drop Inlet w/ Grate
- Manhole
- Curb and Gutter Inlet
- Open Ditch
- Swale Ditch
- Temporary Bench Mark
- Unable To Locate



**PALM BLVD. 41ST TO 49TH
FLAT BOTH SIDES - NO DITCHES OR DRAINAGE**












- PIPE CODE**
- RCP Reinforced Concrete Pipe
 - CMP Corrugated Metal Pipe
 - BFP Bituminous Fiber Pipe
 - DIP Ductile Iron Pipe
 - PVC Plastic Pipe
 - VCP Vitrified Clay Pipe

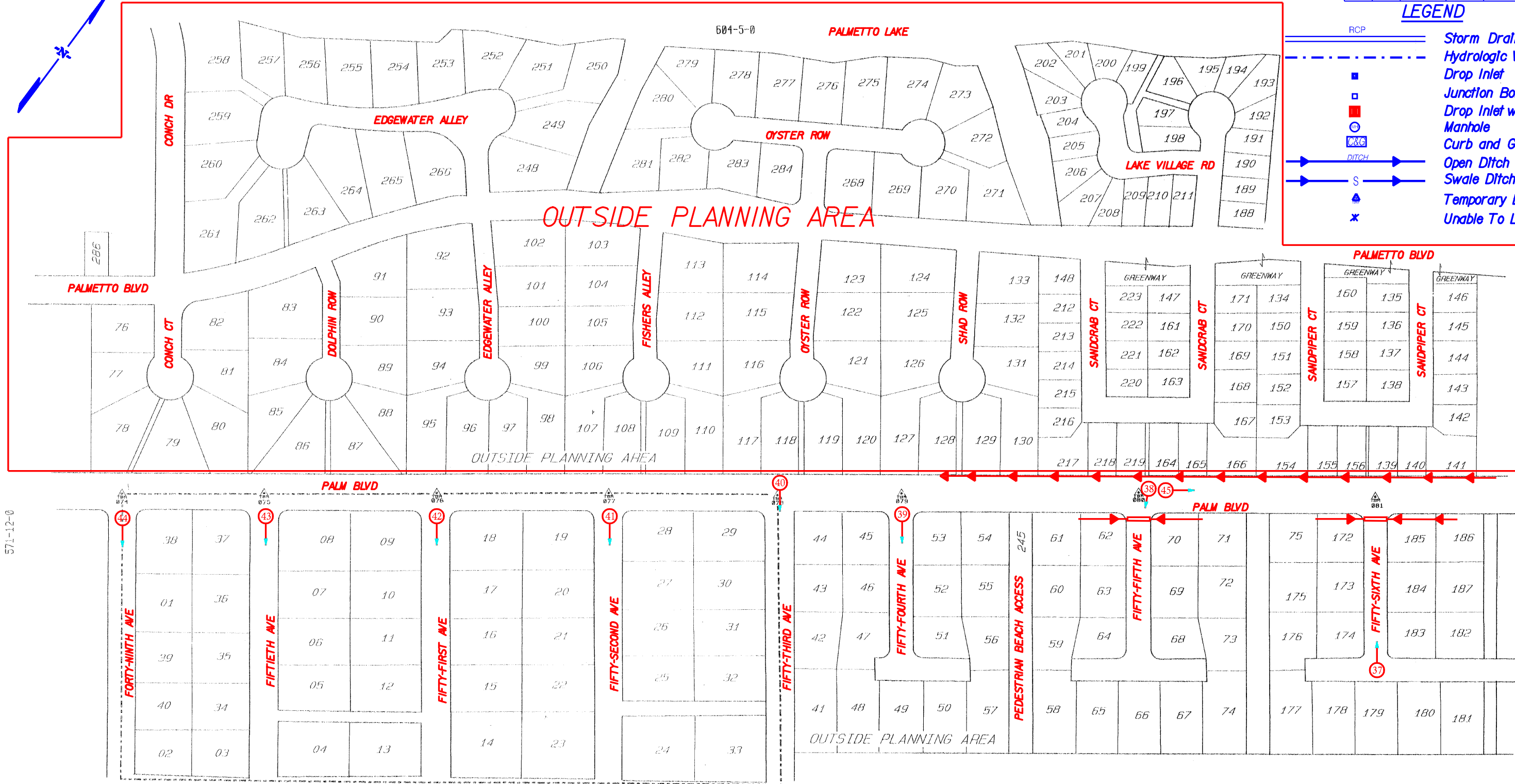


6			
5			
4			
3			
2			
1			
REV. NO.	BY	DATE	DESCRIPTION OF REVISION

FED. RD. DIV. NO.	STATE	COUNTY	FILE NO.	PROJECT NO.	ROUTE NO.	SHEET NO.
3	SC	CHARLESTON				11

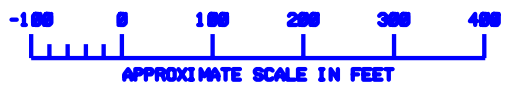
LEGEND

-  RCP Storm Drain Pipe
-  Hydrologic Watershed Divide
-  Drop Inlet
-  Junction Box
-  Drop Inlet w/ Grate
-  Manhole
-  Curb and Gutter Inlet
-  DITCH Open Ditch
-  Swale Ditch
-  Temporary Bench Mark
-  Unable To Locate



571-12-0

604-10-0



PIPE CODE












RCP	Reinforced Concrete Pipe
CMP	Corrugated Metal Pipe
BFP	Bituminous Fiber Pipe
DIP	Ductile Iron Pipe
PVC	Plastic Pipe
VCP	Vitrified Clay Pipe

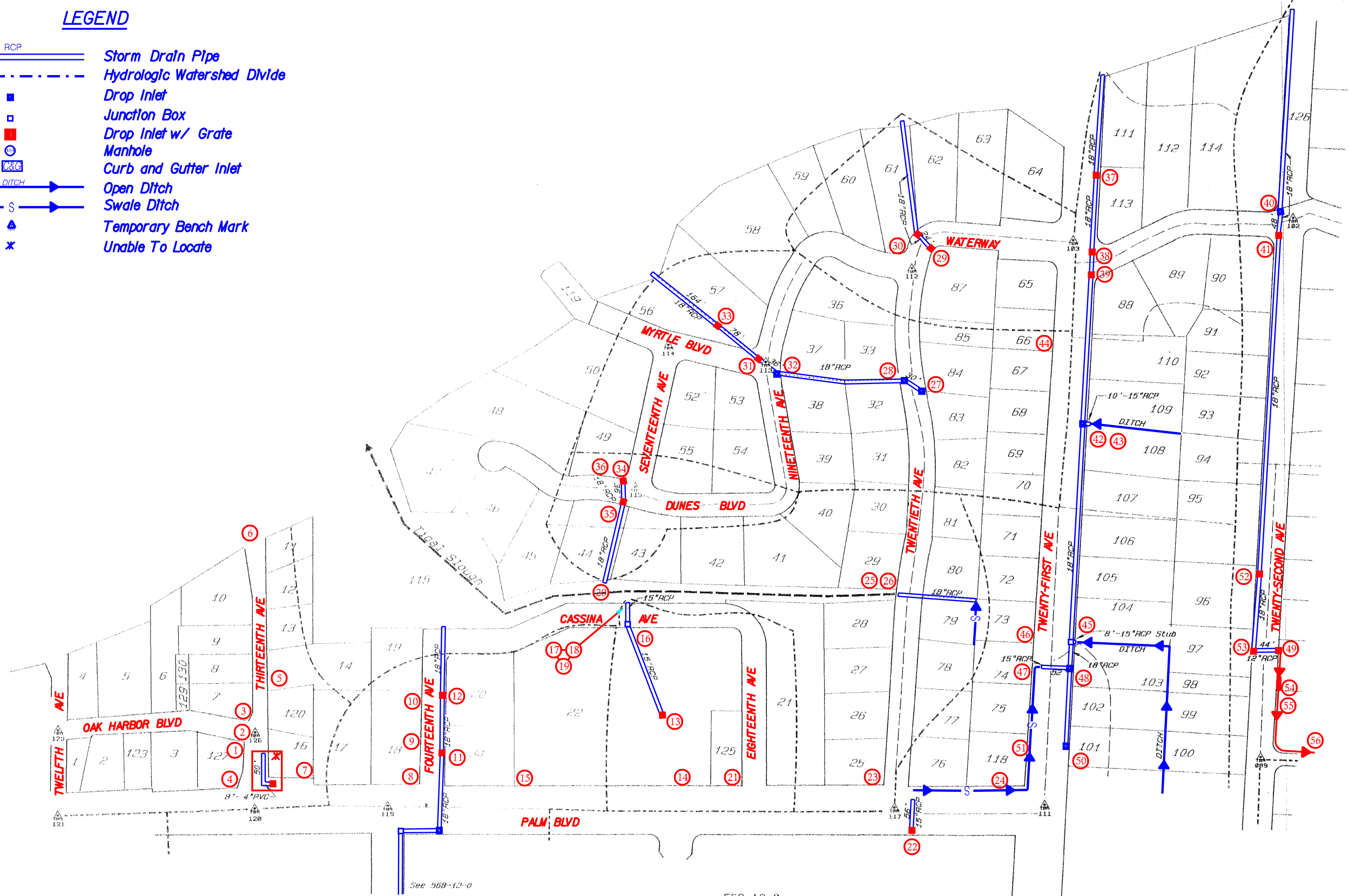


6				
5				
4				
3				
2				
1				
REV. NO.	BY	DATE	DESCRIPTION OF REVISION	

COUNTY OF CHARLESTON DEPARTMENT OF PUBLIC WORKS ISLE OF PALMS DRAINAGE INVENTORY	
SHEET 11	
SCALE 100' = 1"	

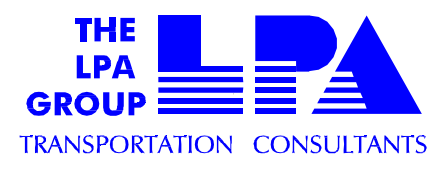
LEGEND

-  Storm Drain Pipe
-  Hydrologic Watershed Divide
-  Drop Inlet
-  Junction Box
-  Drop Inlet w/ Grate
-  Manhole
-  Curb and Gutter Inlet
-  Open Ditch
-  Swale Ditch
-  Temporary Bench Mark
-  Unable To Locate



PIPE CODE

- RCP Reinforced Concrete Pipe
- CMP Corrugated Metal Pipe
- BFP Bituminous Fiber Pipe
- DIP Ductile Iron Pipe
- PVC Plastic Pipe
- VCP Vitrified Clay Pipe



6			
5			
4			
3			
2			
1			
REV. NO.	BY	DATE	DESCRIPTION OF REVISION

COUNTY OF CHARLESTON
 DEPARTMENT OF PUBLIC WORKS
 ISLE OF PALMS DRAINAGE INVENTORY

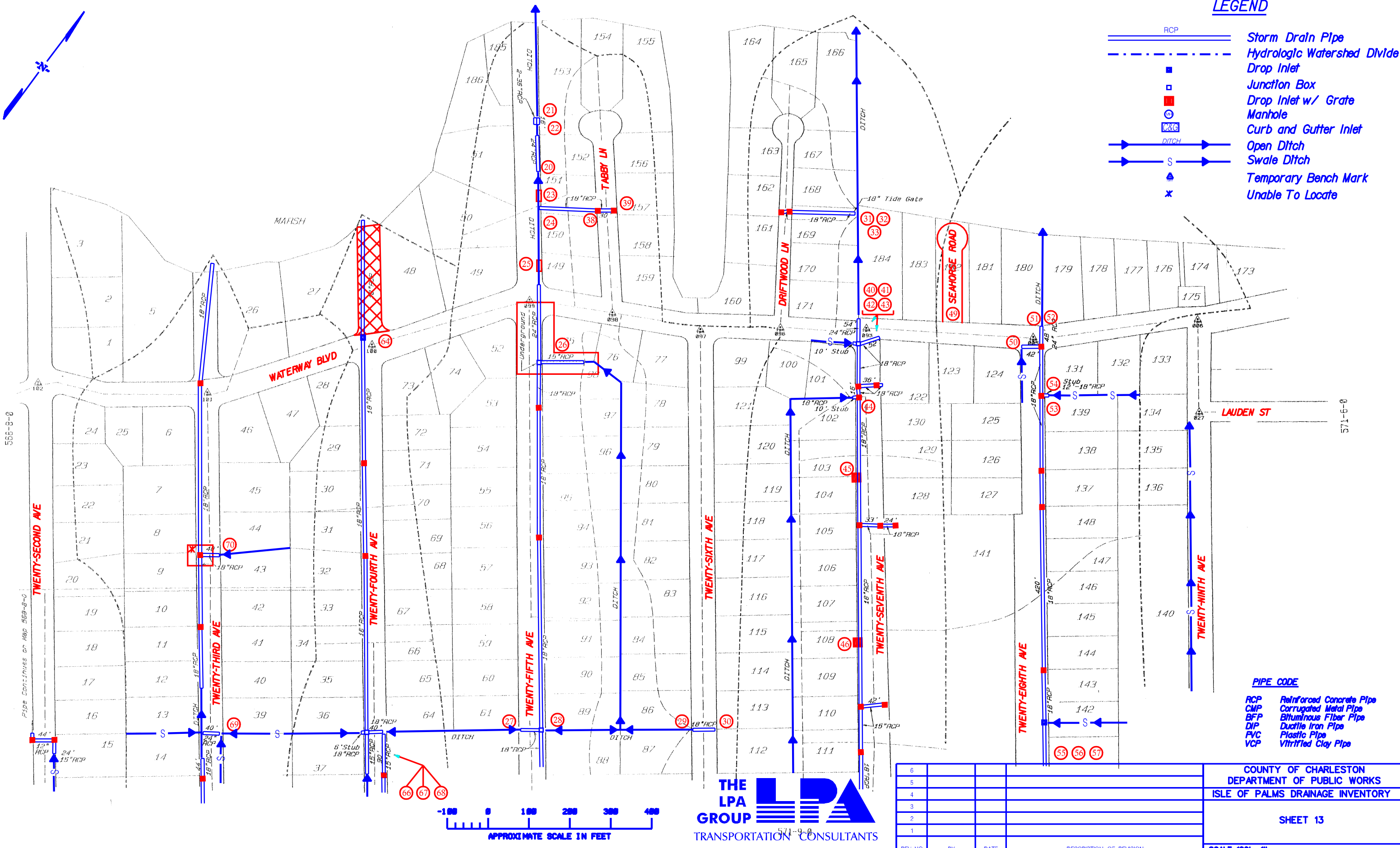
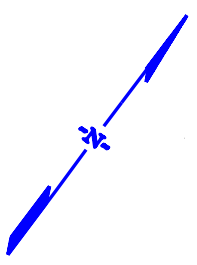
 SHEET 12
 SCALE 100' = 1"

571-S-0

LEGEND

- RCP Storm Drain Pipe
- Hydrologic Watershed Divide
- Drop Inlet
- Junction Box
- Drop Inlet w/ Grate
- Manhole
- Curb and Gutter Inlet
- Open Ditch
- Swale Ditch
- Temporary Bench Mark
- Unable To Locate

- #### PIPE CODE
- RCP Reinforced Concrete Pipe
 - CMP Corrugated Metal Pipe
 - BFP Bituminous Fiber Pipe
 - DIP Ductile Iron Pipe
 - PVC Plastic Pipe
 - VCP Vitrified Clay Pipe



THE LPA GROUP
TRANSPORTATION CONSULTANTS

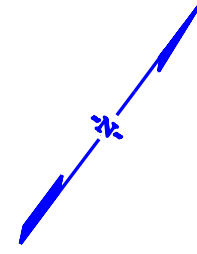
6			
5			
4			
3			
2			
1			
REV. NO.	BY	DATE	DESCRIPTION OF REVISION

COUNTY OF CHARLESTON
DEPARTMENT OF PUBLIC WORKS
ISLE OF PALMS DRAINAGE INVENTORY

SHEET 13

SCALE 100' = 1"

FED. RD. DIST. NO.	STATE	COUNTY	FILE NO.	PROJECT NO.	ROUTE NO.	SHEET NO.
3	SC	CHARLESTON				14



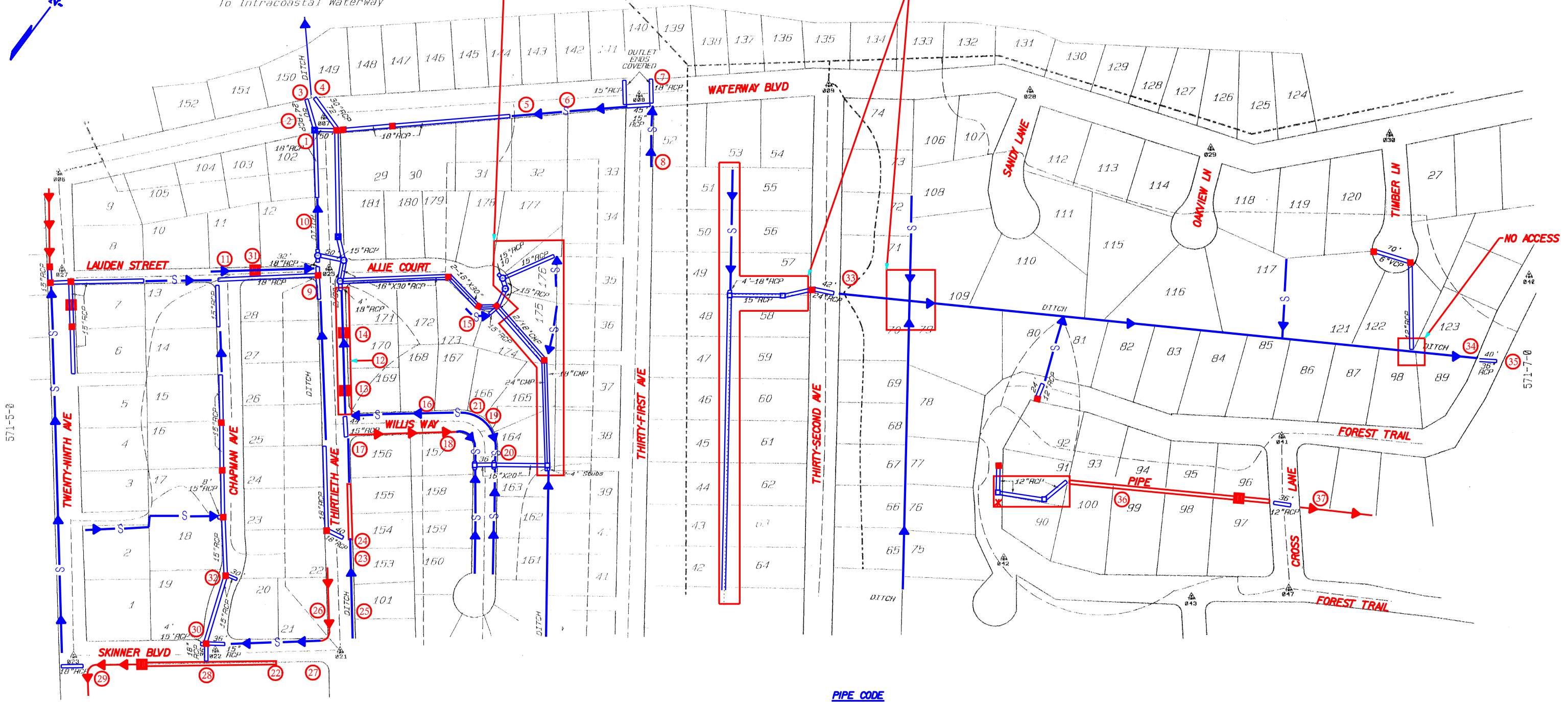
Golf Course
To Intracoastal Waterway

Golf Course

NO MANHOLE OR PIPE LOCATED - COVERED?
NO DITCH LOCATED - PRIVATE PROPERTY
NO '2-18" PIPES' LOCATED

NO ACCESS - FENCES / PRIVATE PROPERTY

NO ACCESS



571-5-0

571-10-0

LEGEND

- RCP Storm Drain Pipe
- Hydrologic Watershed Divide
- Drop Inlet
- Junction Box
- Drop Inlet w/ Grate
- Manhole
- Curb and Gutter Inlet
- Open Ditch
- Swale Ditch
- Temporary Bench Mark
- Unable To Locate

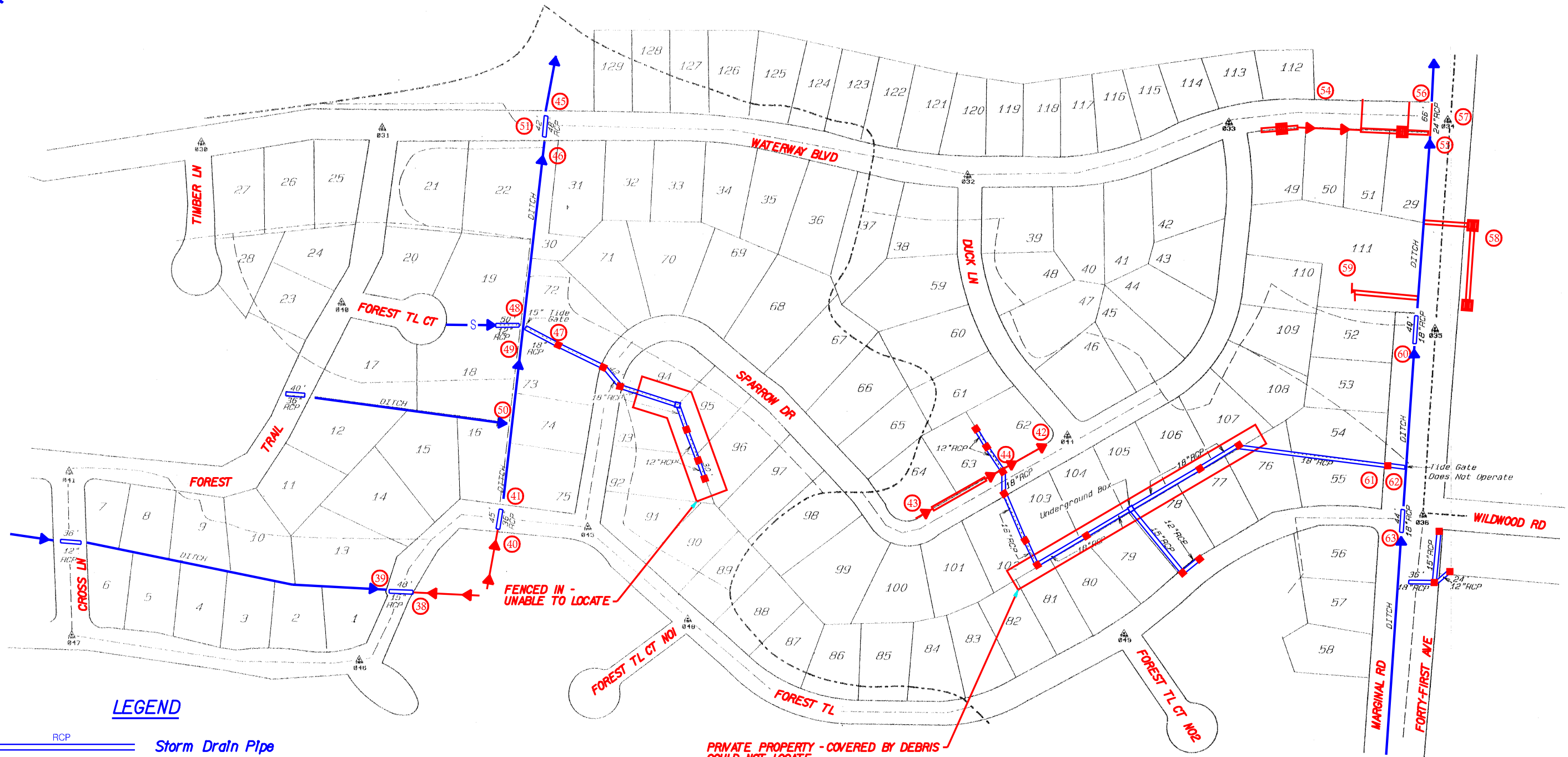
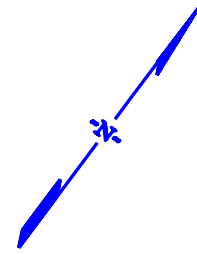
PIPE CODE

- RCP Reinforced Concrete Pipe
- CMP Corrugated Metal Pipe
- BFP Bituminous Fiber Pipe
- DIP Ductile Iron Pipe
- PVC Plastic Pipe
- VCP Vitrified Clay Pipe



6			
5			
4			
3			
2			
1			
REV. NO.	BY	DATE	DESCRIPTION OF REVISION

COUNTY OF CHARLESTON DEPARTMENT OF PUBLIC WORKS ISLE OF PALMS DRAINAGE INVENTORY	
SHEET 14	
SCALE 100' = 1"	



LEGEND

- Storm Drain Pipe
- Hydrologic Watershed Divide
- Drop Inlet
- Junction Box
- Drop Inlet w/ Grate
- Manhole
- Curb and Gutter Inlet
- Open Ditch
- Swale Ditch
- Temporary Bench Mark
- Unable To Locate

- PIPE CODE**
- RCP Reinforced Concrete Pipe
 - CMP Corrugated Metal Pipe
 - BFP Bituminous Fiber Pipe
 - DIP Ductile Iron Pipe
 - PVC Plastic Pipe
 - VCP Vitrified Clay Pipe



PRIVATE PROPERTY - COVERED BY DEBRIS -
COULD NOT LOCATE












571-11-0



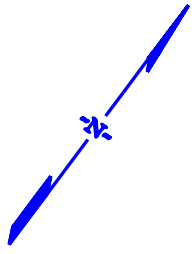
6			
5			
4			
3			
2			
1			
REV. NO.	BY	DATE	DESCRIPTION OF REVISION

COUNTY OF CHARLESTON DEPARTMENT OF PUBLIC WORKS ISLE OF PALMS DRAINAGE INVENTORY	
SHEET 15	
SCALE 100' = 1"	

LEGEND

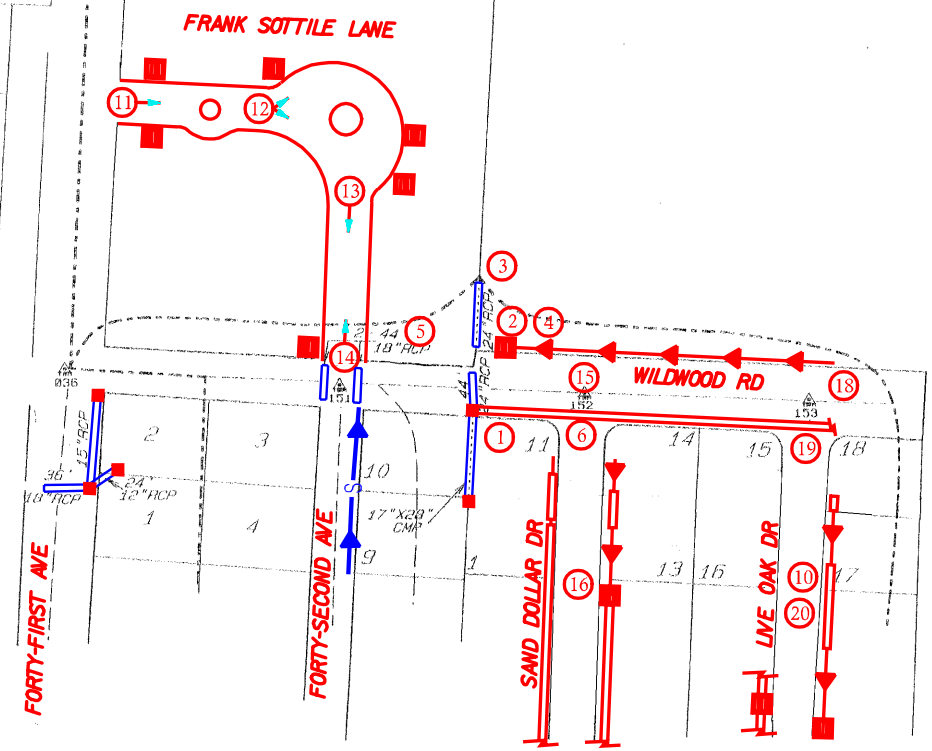
-  RCP Storm Drain Pipe
-  Hydrologic Watershed Divide
-  Drop Inlet
-  Junction Box
-  Drop Inlet w/ Grate
-  Manhole
-  Curb and Gutter Inlet
-  DITCH Open Ditch
-  Swale Ditch
-  Temporary Bench Mark
-  Unable To Locate

AREA NOT COVERED BY SURVEY



571-7-0

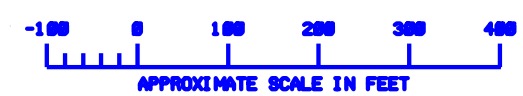
604-2-0



571-12-0

PIPE CODE

- RCP Reinforced Concrete Pipe
- CMP Corrugated Metal Pipe
- BFP Bituminous Fiber Pipe
- DIP Ductile Iron Pipe
- PVC Plastic Pipe
- VCP Vitrified Clay Pipe



6			
5			
4			
3			
2			
1			
REV. NO.	BY	DATE	DESCRIPTION OF REVISION

COUNTY OF CHARLESTON DEPARTMENT OF PUBLIC WORKS ISLE OF PALMS DRAINAGE INVENTORY
SHEET 16
SCALE 100' = 1"