

City of Isle of Palms
Department of Public Works
May 2015
Donnie Pitts – Director

Sanitation:

19.0 tons of C&D were transported to the Bees Ferry landfill

Landscaping/Road Maintenance:

Serviced the pooper-scoopers 4 times.

Cleaned the beach of debris on May 4th, May 8th, May 11th, May 21st,
May 23rd and Memorial Day

Cleaned the median of debris/sand buildup from shopping center to 21st
Ave.

The 21st thru 41st Palm Blvd rights-of-way were mowed by the
Recreation Dept. on May 22nd.

Cleaned the compactor area.

Cleaned the sidewalk from 10th Ave. thru 12th Ave.

Painted and deployed beach barrels throughout the island

Storm Water/Drainage:

Charleston County cleaned the stormwater ditch and pipes on Lauden
and 30th Ave.

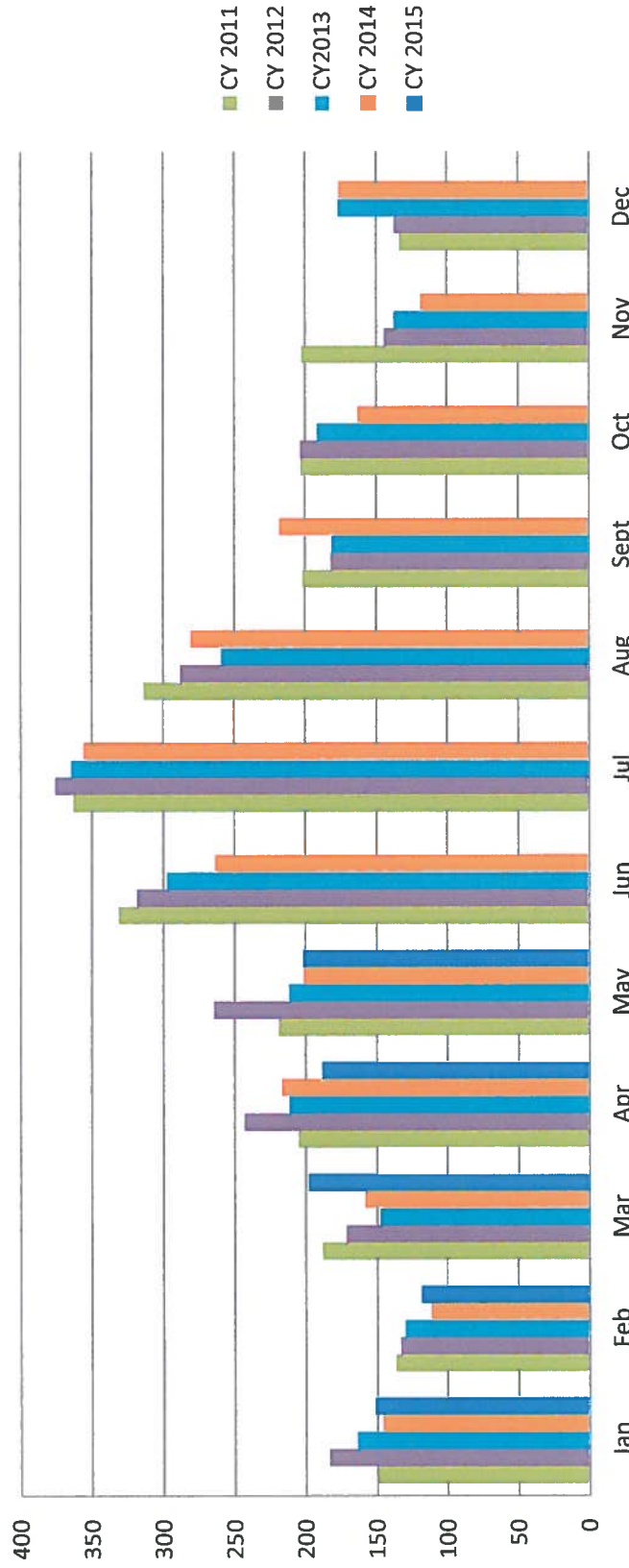
5 Year Garbage

	<u>CY 2011</u>	<u>CY 2012</u>	<u>CY2013</u>	<u>CY 2014</u>	<u>CY 2015</u>
Jan	149.35	183.11	163.58	145.63	151.16
Feb	136.13	132.82	129.73	111.19	118.32
Mar	187.91	171.14	147.49	157.97	197.79
Apr	204.82	242.75	211.4	216.39	188.14
May	218.69	264.14	211.52	200.97	201.43
Jun	331.02	317.8	297.11	263.22	
Jul	362.95	375.29	364.64	355.9	
Aug	313.33	287.83	259.06	280.34	
Sept	201.55	181.54	181.25	217.83	
Oct	202.8	203.08	191.05	162.4	
Nov	202.01	143.83	137.23	118.23	
Dec	133.17	136.79	176.46	176.04	
TOTAL	2643.73	2640.12	2470.52	2406.11	

denotes 2x week service

denotes single stream recycle

5 year Garbage Comparison



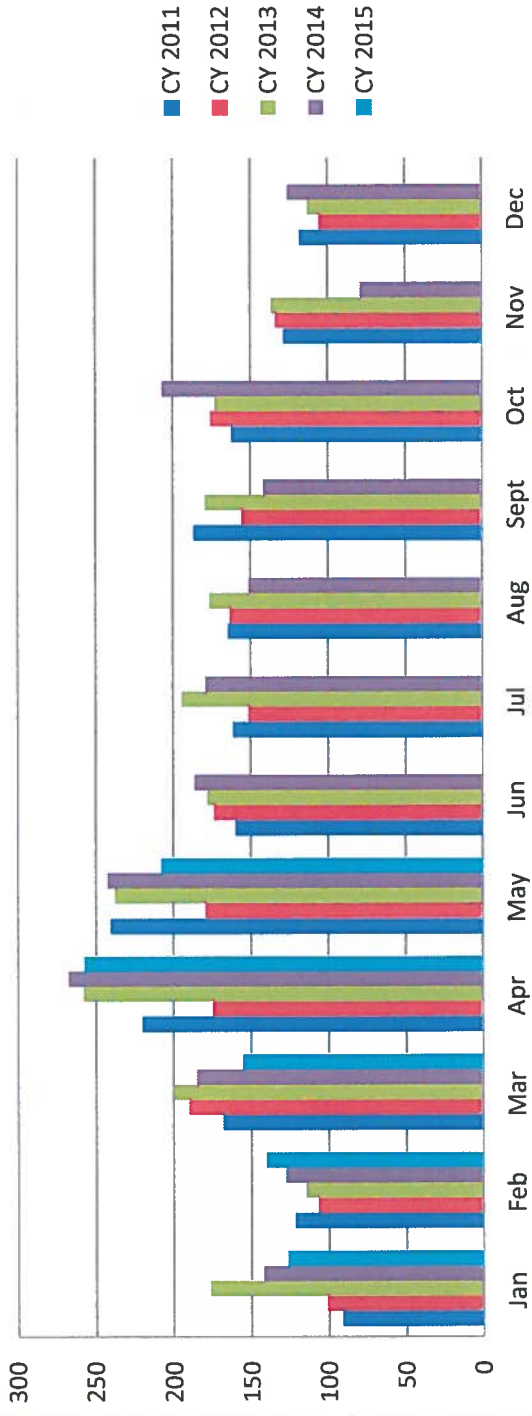
Yearly Yard Debris Comparison

Tonnage

CY 2011 CY 2012 CY 2013 CY 2014 CY 2015

Jan	91.1	100.71	176.07	141.65	126.72
Feb	121.6	106.55	114.67	127.61	140.12
Mar	167.97	189.88	199.83	184.77	155.30
Apr	219.85	174.22	257.42	267.14	257.04
May	240.28	178.9	237.56	242.13	207.70
Jun	159.84	173.42	177.76	186.26	
Jul	161.45	151.13	194.48	178.7	
Aug	164.59	163.35	176.14	150.93	
Sept	186.62	155.5	178.91	141.36	
Oct	162.16	175.34	172.46	206.77	
Nov	128.58	133.47	136.24	78.74	
Dec	118.22	105.08	112.79	125.85	
TOTAL	1922.26	1807.55	2134.33	2031.91	

5 yr yard debris



Isle of Palms

4/25/2015

171 vehicles		Amount In
Aerosol Cans	Cans	188
Acid	Containers	23
Anti-Freeze	Gallons	22
Batteries-Car	Units	9
Ni Cads	Units	80
Alkaline	Units	1,334
Cleaners	Containers	69
Compounds	Containers	115
E-Waste	Pieces	209
Flammables	Containers	221
Fluorescent	Bulbs	132
Gas Cylinders	Containers	18
Glues	Containers	25
Latex Paint	Can Count	642
Latex Paint	5 gal.	26
Oil Filters	Pieces	16
Oil Paint	Gallons	261
Oil Paint	5 gal.	19
Pesticides	Containers	97