

City of Isle of Palms
Department of Public Works
October 2012
Donnie Pitts – Director

Sanitation:

No overtime to report.

31.82 tons of C&D were transported to the Bees Ferry landfill.

Landscaping/Road Maintenance:

Serviced the pooper-scoopers 2 times.

Cleaned the beach of debris on Oct. 5th, Oct. 17th and October 25th.

Continued the beach path fall maintenance at 1st Ave. thru 41st Ave.

Mowed the Breach Inlet right-of-way and beach path.

Mowed the inland side of Palm Blvd to Breach Inlet. (bicycle path)

Contracted with Sweeping South for 1 additional sweeping due to the excessive debris on the IOP Connector. The City contractor could not service the City for an additional sweep.

Cleaned the graffiti off the sign at 29th and Hartnett.

Replaced the Connector lights and entrance sign.

Storm Water:

Eadies Drain and Vac completed the collection box cleaning of Year 3 of the maintenance plan.

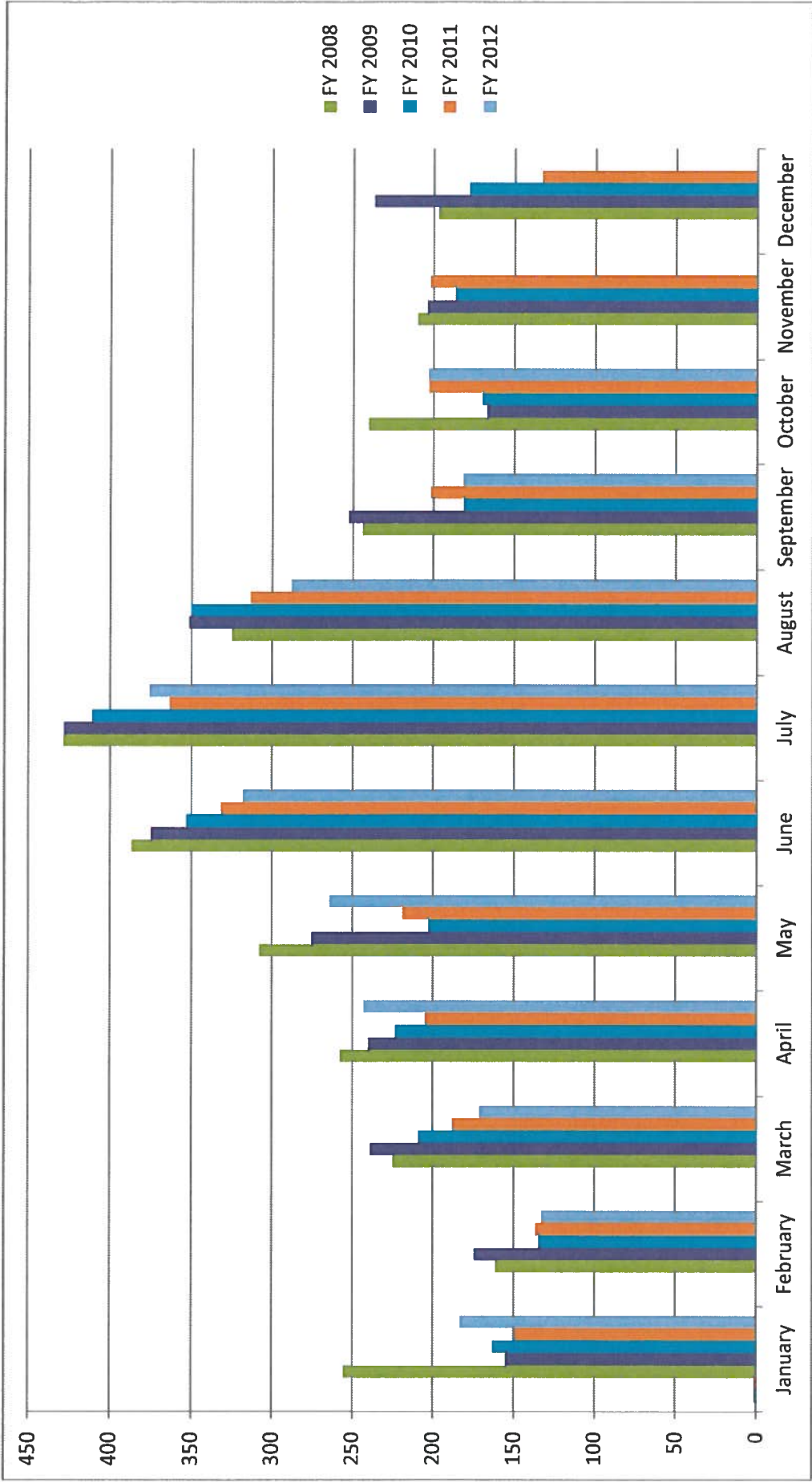
Charleston County:

Single-stream recycle bins delivered from 30th ave. thru Wild Dunes on 10/25/12.

	<u>FY 2008</u>	<u>FY 2009</u>	<u>FY 2010</u>	<u>FY 2011</u>	<u>FY 2012</u>
January	255.58	154.9	163.04	149.35	183.11
February	161.17	174.42	134.49	136.13	132.82
March	224.81	238.66	208.97	187.91	171.14
April	257.63	240.06	223.43	204.82	242.75
May	307.39	275.02	202.79	218.69	264.14
June	386.63	374.58	352.9	331.02	317.8
July	428.42	427.97	410.92	362.95	375.29
August	324.77	351.25	349.31	313.33	287.83
September	243.67	252.55	181.61	201.55	181.54
October	240.38	166.9	169.78	202.8	203.08
November	210.16	203.71	186.79	202.01	
December	197.12	236.66	178.23	133.17	
TOTAL	3237.73	3096.68	2762.26	2643.73	2359.5

2x week

denotes single stream recycle



Tonnage

Month	<u>2011</u>	<u>2012</u>
January	91.1	100.71
February	121.6	106.55
March	167.97	189.88
April	219.85	174.22
May	240.28	178.9
June	159.84	173.42
July	161.45	151.13
August	164.59	163.35
September	186.62	155.5
October	162.16	175.34
November	128.58	
December	118.22	
TOTAL	1922.26	1569

