

City of Isle of Palms
Department of Public Works
November/December 2012
Donnie Pitts- Director

Sanitation:

No overtime to report.

20.55 tons of C&D were transported to the Bees Ferry landfill in November and 10.99 tons in December.

Landscaping/Road Maintenance:

Serviced the pooper-scoopers 2 times in November and 2 times in December.

Cleaned and scraped the bike path from Breach Inlet to 7th Ave.

Mowed the Breach Inlet right-of-way and beach path.

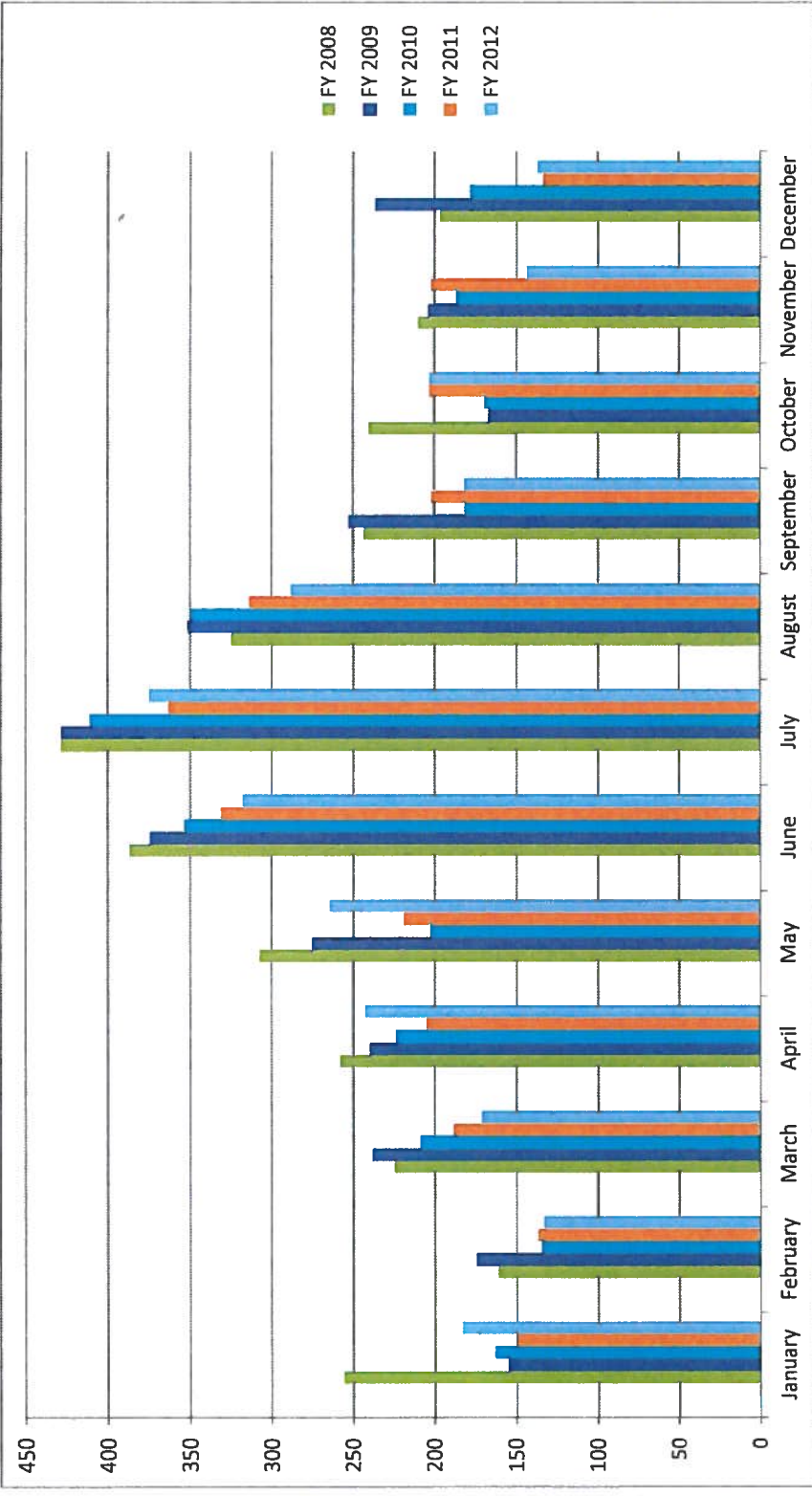
Mowed the inland side of Palm Blvd to Breach Inlet (bicycle path).

Cleaned the Ocean Blvd commercial district from the Christmas tree lighting ceremony.

	<u>FY 2008</u>	<u>FY 2009</u>	<u>FY 2010</u>	<u>FY 2011</u>	<u>FY 2012</u>
January	255.58	154.9	163.04	149.35	183.11
February	161.17	174.42	134.49	136.13	132.82
March	224.81	238.66	208.97	187.91	171.14
April	257.63	240.06	223.43	204.82	242.75
May	307.39	275.02	202.79	218.69	264.14
June	386.63	374.58	352.9	331.02	317.8
July	428.42	427.97	410.92	362.95	375.29
August	324.77	351.25	349.31	313.33	287.83
September	243.67	252.55	181.61	201.55	181.54
October	240.38	166.9	169.78	202.8	203.08
November	210.16	203.71	186.79	202.01	143.83
December	197.12	236.66	178.23	133.17	136.79
TOTAL	3237.73	3096.68	2762.26	2643.73	2640.12

2x week

denotes single stream recycle



Tonnage

	<u>2011</u>	<u>2012</u>
Month		
January	91.1	100.71
February	121.6	106.55
March	167.97	189.88
April	219.85	174.22
May	240.28	178.9
June	159.84	173.42
July	161.45	151.13
August	164.59	163.35
September	186.62	155.5
October	162.16	175.34
November	128.58	133.47
December	118.22	105.08
TOTAL	1922.26	1807.55

