

City of Isle of Palms
Department of Public Works
June 2012
Donnie Pitts - Director

Sanitation:

7.83 tons of C&D were transported to the Bees Ferry landfill.
One shift for debris removal on Saturday June 9, 3 men @ 6hrs each.

Landscaping/Road Maintenance:

Serviced the pooper-scoopers 6 times.
Cleaned the beach of debris on June 1st, 4th, 7th, 11th, 16th, 18th, 21st,
25th, 27th and 29th.
Mowed the rights-of-way from 21st to 57th Ave., and at 41st Ave.
Cleaned the City garbage compactor.
Cleaned the sidewalk at Breach Inlet and 14th Ave. to 21st Ave.
Cleaned and mowed the Building Dept. grounds.
Cleaned the 45th and 46th beach path.
Mowed the 13th Ave. lots.

**City of Isle of Palms
Department of Public Works
July 2012
Donnie Pitts – Director**

Sanitation:

34.73 tons of C&D were transported to the Bees Ferry landfill.
Operated one 6-hour shift of the debris pickup on Saturday, July 14.

Landscaping/Road Maintenance:

Serviced the pooper-scoopers 4 times in July.
Cleaned the beach of debris on July 2nd, 3rd, 4th, 5th, 7th, 9th, 12th, 16th, 20th,
23rd, 25th, and 27th.
Mowed the rights-of-way from 21st to 57th Ave., 41st Ave. two times
Mowed the Waterway Blvd. right-of-way/bike path one time.
Cleaned the Breach Inlet sidewalk.
Cleaned the debris from the dunes at the public restrooms.
Cut limb overhang in front of 910 Palm Blvd. per IOPPD.
Assisted Animal Control Officer with removal of animal behind Forest
Trail Court 1.

Stormwater:

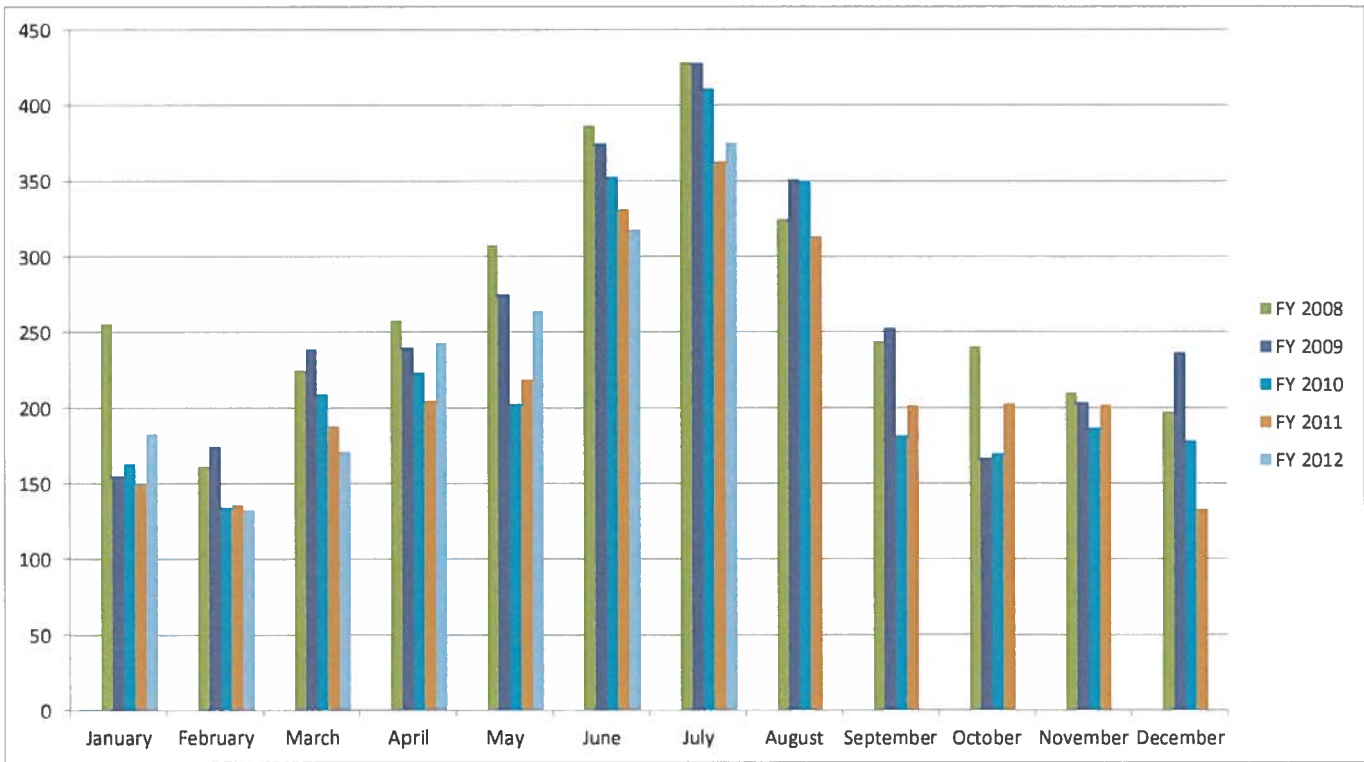
Charleston County cleaned the 41st Avenue ditch.
Charleston County initiated the 21st Ave. repairs to the drainage system;
repairs are ongoing.

FY 2008 FY 2009 FY 2010 FY 2011 FY 2012

January	255.58	154.9	163.04	149.35	183.11
February	161.17	174.42	134.49	136.13	132.82
March	224.81	238.66	208.97	187.91	171.14
April	257.63	240.06	223.43	204.82	242.75
May	307.39	275.02	202.79	218.69	264.14
June	386.63	374.58	352.9	331.02	317.8
July	428.42	427.97	410.92	362.95	375.29
August	324.77	351.25	349.31	313.33	
September	243.67	252.55	181.61	201.55	
October	240.38	166.9	169.78	202.8	
November	210.16	203.71	186.79	202.01	
December	197.12	236.66	178.23	133.17	
TOTAL	3237.73	3096.68	2762.26	2643.73	1687.05

2x week

denotes single stream recycle



Tonnage

	<u>2011</u>	<u>2012</u>
Month		
January	91.1	100.71
February	121.6	106.55
March	167.97	189.88
April	219.85	174.22
May	240.28	178.9
June	159.84	173.42
July	161.45	151.13
August	164.59	
September	186.62	
October	162.16	
November	128.58	
December	118.22	
TOTAL	1922.26	1074.81

