

City of Isle of Palms
Department of Public Works
January 2010
Donnie Pitts- Director

Sanitation:

One container of metal was transported to Charleston Steel.
15.78 tons of C&D were transported to the Bees Ferry landfill in January.

Landscaping/Road Maintenance:

Serviced the pooper scoopers 2 times in January.
Installed 75 parking stops at the City parking lot.
Pruned the palm trees in the City parking lot.
Assisted in pick up of a construction load at the intersection of Palm Blvd and 14th Ave.

Storm Water/Drainage:

Began pumping water on 46th , 50th , 51st and 53rd Ave. January 19th.

Pumped water on 46th, 49th, 50th, 51st, 53rd and 56th thru January 26th.

Began pumping water on the same Avenues on January 30 for a separate event.

Moved one pump from 50th Avenue to 48th Avenue after discussions with the City Administrator on Sunday January 31st.

Eadies Construction completed the ditch renovation of the Forrest Trail/Hartnett Blvd. ditch.

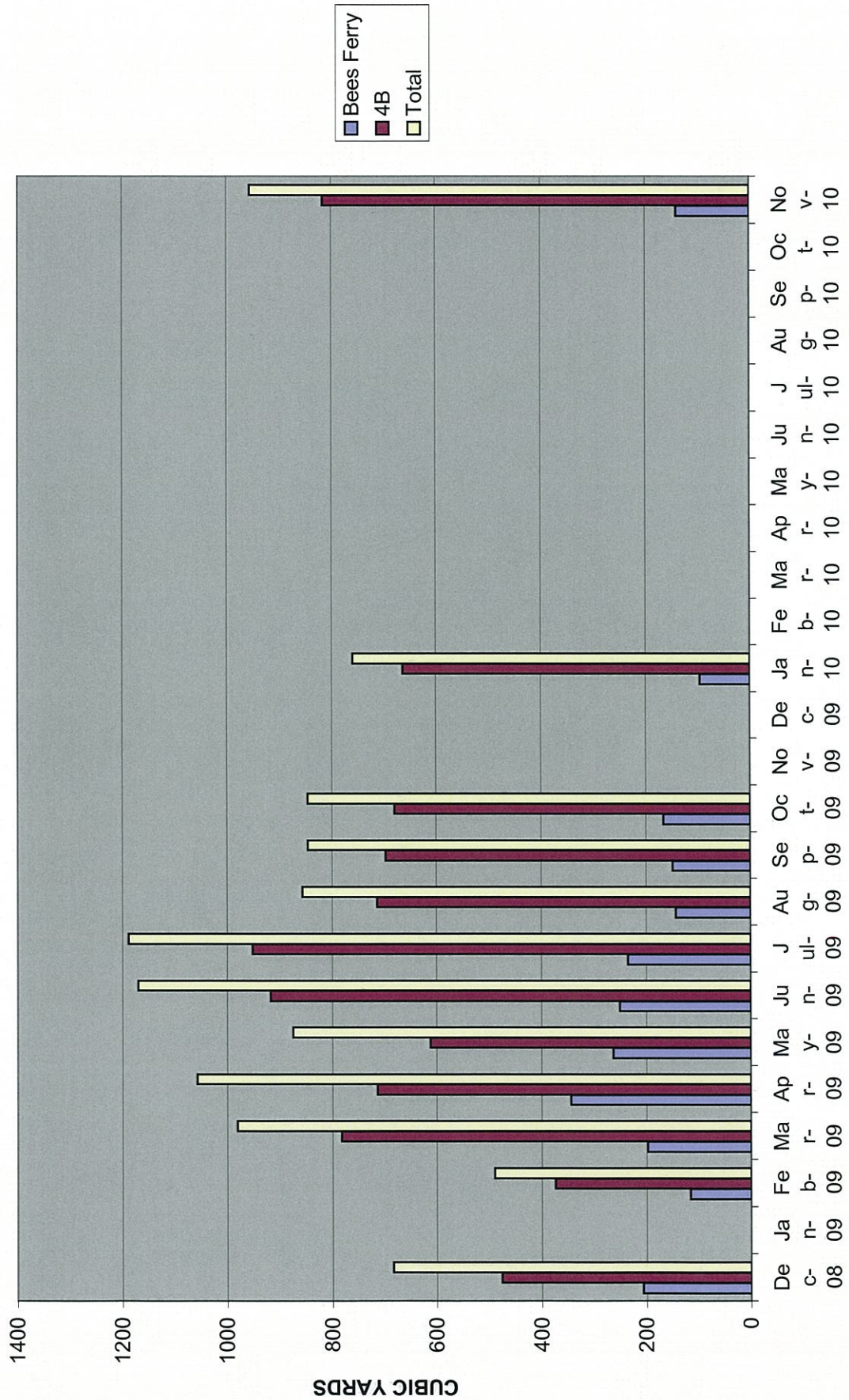
Special recognition to the IOPFD for assistance in monitoring the pumps during PW off duty hours.

City of Isle of Palms
Public Works Department
Tonnage Report

TONNAGE

	Bees Ferry	Montenay	Total
Jan-10	163.04	0	163.04
Feb-09	82.26	92.16	174.42
Mar-09	120.54	118.38	238.92
Apr-09	137.18	102.88	240.06
May-09	153.36	121.66	275.02
Jun-09	174.98	199.6	374.58
Jul-09	199.85	211.07	410.92
Aug-09	155.87	191.02	346.89
Sep-09	124.68	115.45	240.13
Oct-09	90.37	75.21	165.58
Nov-09	85.45	101.34	186.79
Dec-09	178.23	0	178.23

ISLE OF PALMS YARD DEBRIS CUBIC YARDS BY MONTH



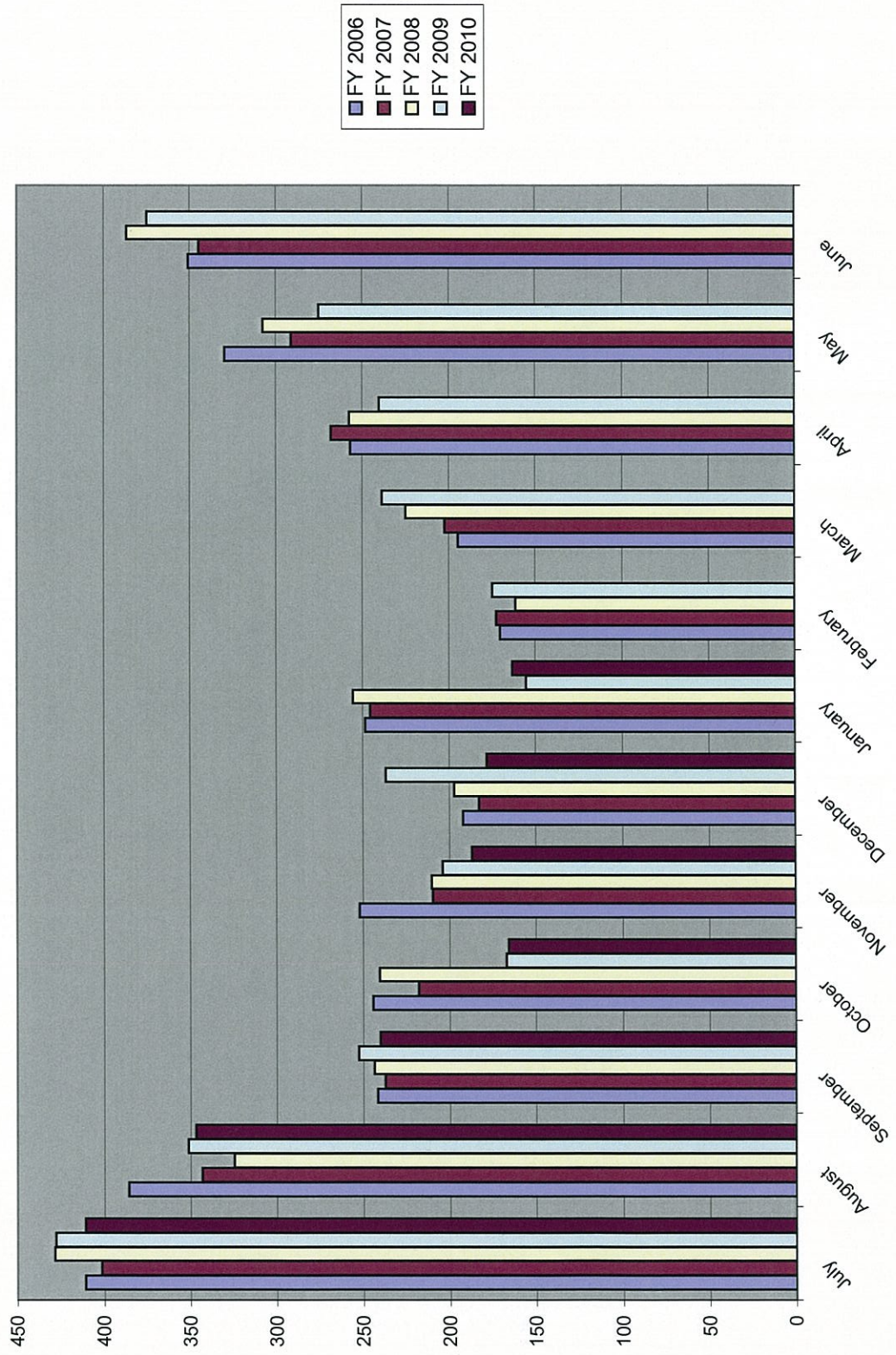
City of Isle of Palms
Public Works Department
Tonnage Report

Assume 1 ton delivered to Bees Ferry equals 2.5 cubic yards of deb

CUBIC YARDS

	Bees Ferry	4B	Total
Jan-10	95.7	663	758.7
Feb-09	115.82	374	489.82
Mar-09	198.6	782	980.6
Apr-09	343.38	714	1057.38
May-09	263.08	612	875.08
Jun-09	251.23	918	1169.23
Jul-09	235.53	952	1187.53
Aug-09	142.9	714	856.9
Sep-09	148.8	697	845.8
Oct-09	166.15	680	846.15
Nov-09	139.95	816	955.95
Dec-09	207.38	476	683.38

City of Isle of Palms Household Garbage Tonnage Comparison

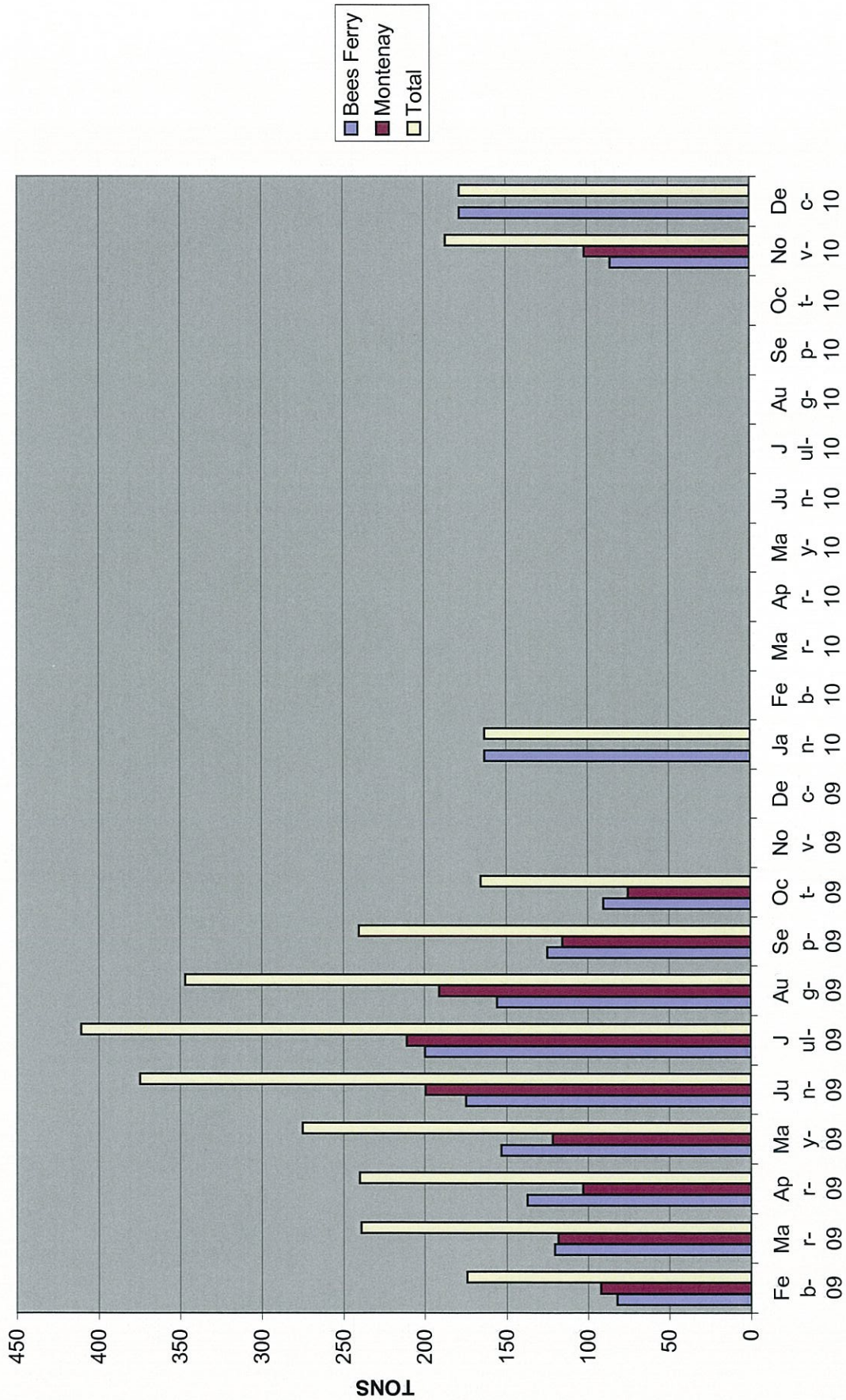


City of Isle of Palms
Public Works Department
Tonnage Report

TONNAGE

	FY 2006	FY 2007	FY 2008	FY 2009	FY 2010
July	411.06	401.61	428.42	427.97	410.92
August	385.93	343.29	324.77	351.25	346.89
September	241.97	237.28	243.67	252.55	240.13
October	244.26	217.92	240.38	166.9	165.58
November	252.01	209.49	210.16	203.71	186.79
December	191.77	182.65	197.12	236.66	178.23
January	248.55	245.79	255.58	154.9	163.04
February	170.17	172.46	161.17	174.42	
March	194.5	201.97	224.81	238.66	
April	256.81	268.05	257.63	240.06	
May	329.46	291.22	307.39	275.02	
June	350.64	344.67	386.63	374.58	

ISLE OF PALMS GARBAGE TONNAGE BY MONTH



Vehicle Maintenance 2009-2010

Date	Vehicle	Description	Vendor	Cost	BALANCE 46793.87
4-Jan	pw17	tail light	J Haak Fleet	\$34.71	
4-Jan	pw1	pm's	J Haak Fleet	99.41	
4-Jan	pw14	hyd. Line/tire repair	J Haak Fleet	252.35	
4-Jan	pw22	elect. Pig tail/repairs	J Haak Fleet	159.57	
4-Jan	pw15	air pressure switch	J Haak Fleet	87.99	
4-Jan	pw18	elect. Battery	J Haak Fleet	35.5	
4-Jan	pw15	pm's	J Haak Fleet	608.38	
11-Jan	pw22	hydraulic leak	J Haak Fleet	28.4	
11-Jan	pw2	head light	J Haak Fleet	37.48	
11-Jan	pw16	tire repair	J Haak Fleet	40.48	
11-Jan	pw9	pm's	J Haak Fleet	245.53	
11-Jan	pw15	main hydraulic lines	J Haak Fleet	486.6	
11-Jan	pw2	install drain valve	J Haak Fleet	41.13	
11-Jan	pw20	install drain valve	J Haak Fleet	49.33	
18-Jan	pw22	install drain valve	J Haak Fleet	48.13	
18-Jan	pw14	radiator/coolant	J Haak Fleet	138.17	
18-Jan	pw9	air filter	J Haak Fleet	41.58	
18-Jan	pw10	pm's	J Haak Fleet	65.38	
18-Jan	pw20	tires	Williams tire	562.16	
18-Jan	pw22	pm's	J Haak Fleet	392.15	
18-Jan	pw14	pm's	J Haak Fleet	538.16	
				\$3,992.59	-3992.59
		ENDING BALANCE			42801.28